



Quality Tools & Controls

Suzuki®

APPLICATIONS

Table of Contents

Introduction

Intro to Cables	5
Bulk Cable, Cable Fittings and Cable Fittings Kit	6
Intro to Carburetor Caps	6
Universal Cables	7
Intro to Throttles and Throttle Kits	8
Intro to Throttles and Throttle Sleeves	9
Intro to Levers, Off-Road and Street	10 - 11

Cable Applications

Black Vinyl	12 - 17
Black Vinyl Special Street	18
Black Vinyl Special Off-Road	18
Armor Coat (AC) - Metric Cruisers	19
T-2 Gray Off-Road	20
T-2 Gray Sport Bike	20

Control Applications

Twist Throttles, Cables for Throttles and Throttle Sleeves

Twist Throttle Kits	21
Cables for Vortex™ Throttle	22
Cables for Turbo™ Throttle	23
Cables for Magura 314™ Throttle	24
Cables for CR Competition™	24 - 25
Cables for CR Pro™ Throttles	24 - 25
Cables for Agricultural (AG) Throttle	24 - 25
Cables for Straight Push-Pull Throttle	25
Throttle Sleeves	26

Lever Applications

OE Style Replacement Levers	27 - 29
MX Forged Levers	30
Wide Blade Levers	30

Rim Locks

Rim Locks	31
-----------	----

Tools

Tire Tools	31
Suspension Tools	31
Flywheel Pullers	31
Pro Bleeders	31

Reference Chart

Suzuki Reference Chart	32
------------------------	----

What's in a Name?

What's in a Name?	33
-------------------	----

Terms of Business:

Motion Pro sells to authorized powersports distributors, powersports dealers, specialty manufacturers and retail consumers. We encourage retail consumers to purchase our products from their local powersports dealer where they can see an item before purchasing it, obtain necessary technical advice and information, save shipping charges, and obtain additional services that we cannot offer. We encourage powersports dealers to buy our products from one of our authorized distributors to get the lowest pricing and best terms. Our terms of sale to powersports dealers and retail consumers are FOB San Carlos, California and payment must be made by credit card or money order. We do not issue refunds or accept returns except in case of warranty where we have chosen to issue a refund instead of repair or replacement. Please call us if you cannot find the product you are looking for at your local dealer or favorite distributor.

We accept orders by mail, email, telephone or fax from authorized account holders. Our staff is available during regular business hours (pacific standard time) to answer your technical questions or special application needs. For more information contact your dealer, visit us at www.motionpro.com or give us a call and one of our sales representatives will be happy to answer any questions you may have. Our office hours are 8:00am to 5:00pm PST, Monday through Friday.

Part Numbering:

All Motion Pro cables are individually packed in poly sleeves with a color-coded header card. Each color represents a specific brand or type of cable. Our part number and the type of cable is printed on each header card. In addition, the Motion Pro part number is embossed on each cable to ensure positive identification.

Returns:

Warranty claims must be made directly to Motion Pro, Inc. Please call the Motion Pro Warranty Department during regular business hours (M-F, 8-5 pm, PST) to obtain an RGA number before you return any product to Motion Pro. We will not accept product that is returned without a Motion Pro issued RGA number. After you obtain an RGA number, send the item along with a copy of your purchase receipt to Motion Pro Warranty Dept., 867 American Street, San Carlos, CA 94070. The RGA number must be clearly marked on the outside of the package. Please include a brief description of the problem, your full name, company name, address, and telephone number and email address. We cannot process warranty claims that are made with incomplete information or without a valid RGA number or purchase receipt. Warranties on Motion Pro products are applicable to the original purchaser only and are not transferable. Claimant is responsible for all freight charges to return product to Motion Pro. If upon inspection we find that the product was covered under the Motion Pro warranty for that product we will, at our choice, either repair or replace the item at no charge, freight prepaid. Unless specifically requested, we will not return product sent to us if we determine that the product is no longer covered under the applicable warranty or the damage was due to abuse or neglect. Claimant is responsible for freight charges to return product to claimant that is not covered under warranty.

Motion Pro warranties are limited; see the "Warranty Limitations" for further information.

Warranty Limitations:

As to products where Motion Pro, Inc. is not the manufacturer, Motion Pro, Inc. grants no warranties whatsoever, whether express or implied or statutory, including without limitation, the implied warranties of merchantability and fitness for a particular purpose. The customers' sole remedy is specifically limited to the warranties, if any, granted by the manufacturer of the product. As to product, if any, where Motion Pro, Inc. is the manufacturer, Motion Pro, Inc. guarantees said products for one year from the date of purchase by the customer against defects in materials and workmanship only, and that guarantee is limited to the repair or replacement of that product only. Repair or replacement of any part is subject to Motion Pro, Inc. determining that the part is in fact defective and that the part was not subjected to abuse or excessive use and was properly installed, serviced and maintained. The above is customer's exclusive remedy. The above is expressly in lieu of all warranties express or implied and of all other obligations or liabilities. In no event shall Motion Pro, Inc. be liable for any incidental or consequential damages arising from the breach of any warranties, improper installation, the failure to deliver, delay in delivery, delivery of non-conforming parts, or any other breach of contract or duty. There are no warranties, express or implied, including any warranty of merchantability and fitness for a particular purpose, which extend beyond the face of this statement.

Back Orders:

All back orders should be confirmed directly with your distributor.

Motion Pro® Inc.

Reserves the right to change any and all prices without notice.

Brand Names: The names of Harley-Davidson, Honda, Kawasaki, KTM, Suzuki, Yamaha, Arctic Cat, Polaris, Bombardier, Can-Am and other brands, as well as part numbers are used as a reference only. Our intention is that our products can be used on your customers brand-name vehicles. No products in our catalog are made by or with the permission of Harley-Davidson, Honda, Kawasaki, KTM, Suzuki, Yamaha or any other company that manufactures a vehicle our parts may be used on.

Copyright 2007

Motion Pro®, Inc.: This catalog and any supplement (including photos, line art, product descriptions, and manner of presentation), are the property of Motion Pro®, Inc. and may not be copied or reproduced without the express written permission of Motion Pro®, Inc.

Trademark:

Motion Pro® is a registered trademark. Any reproduction of the name or likeness without the express written permission of Motion Pro, Inc. is prohibited.

About This Catalog

We completely reorganized our applications catalog in an effort to give you a book that is easier to use, more complete, and one that you can easily update when we publish new information.

Not every dealer carries product for every brand of vehicle so we separated out each brand of vehicle and now publish separate books for each brand.

Within each Model Group we organized applications by product category (Black Vinyl Cables, Armor Coat Cables, Levers, Etc.). Within each product category the applications are listed by displacement and then alphabetically by model and year.

We will update this catalog various times during the year as new applications become available and post the updated catalog on our web site for easy downloading. We will note on our web site which pages have changed so you can either print out the entire catalog or just those pages that have been updated.

We recommend that you place each page in a sheet protector and then put them in a three ring binder. We recommend the Avery® Heavyweight Presentation Sheet Protectors for this purpose (available from your local office supply store).

Thank you for using Motion Pro products.

Cables

Motion Pro® Standard Black Vinyl Cables

Our standard replacement black vinyl cables meet or exceed O.E. quality. Black Vinyl cables feature a rolled tempered-steel wire housing made to exact inner and outer specifications to insure correct clearances for the inner wire. All cables have an inner nylon sleeve for longer life and smooth operation. Motion Pro® uses the terminology "coil wound" (CW) to describe the standard type of cable housing.

Motion Pro® Armor Coat Braided Stainless Steel Cables

Dress your bike up with a set of Motion Pro®, Armor Coat Braided Stainless Steel Cables. Armor Coat cables feature a crystal-clear protective coating to protect the finish on your motorcycle and preserve the radiance of the braided stainless steel cables. Extensively tested to resist the effects of the sun's UV rays.

Motion Pro® T2 Motocross Cables

Motion Pro T2 cables are our very best cables. All our T2 cables feature a Polyethylene (PE) liner for smooth operation and durability. Motion Pro T2 cables have proven their superiority in the demanding sports of Supercross, MX, enduro, and dirt track racing.

T2 throttle cables feature rolled tempered-steel coil wound (CW) housing with 1.5mm or 1.2 mm inner wire for strength and durability.

Our T2 clutch cables feature longitudinally wound (LW) housing. Clutch cables are subject to very heavy loads and the (LW) housing used in our T2 cables resists compression under heavy loads to deliver a precise, positive, non-mushy feel for enhanced performance.

All our cables are manufactured for specific models to insure perfect fitment. Complete cable kits are available for most popular MX and Offroad bikes.



What is Longitudinally Wound Housing (LW)

- Longitudinally wound housing will not compress and feel mushy under heavy loads.
- (LW) cables deliver a precise, positive feel for enhanced performance.
- PE Liner for durability and smoothness
- All our cables are manufactured for specific models to insure perfect fitment.



Longitudinally Wound Housing (LW)



Coil Wound Housing (CW)

Motion Pro® T2 Gray Sportbike Cables

Motion Pro® knows that precision control is required for racing today's advanced and remarkably fast Sportbikes. Our T2 series of cables for Sportbikes are the latest addition to our growing line of performance cables. This is the same program that was successfully introduced and embraced in the demanding sports of Motocross, Supercross, and Off-road racing. The overwhelming success of the T2 series of cables for Off-road racing applications inspired the development of the T2 series of cables for Sportbikes. T2 clutch cables for Sportbikes are gray and feature our "longitudinally-wound" (LW) housing which resists housing compression and results in a precise and easy to operate clutch. Roadrace testing confirms that today's Sportbikes with large displacement motors and high performance clutches can increase their clutch control by eliminating the "spongy" clutch lever feel and imprecise engagement that standard OEM coil-wound cables provide.



Bulk Cable

Galvanized Wire

- 01-1025 Inner Wire 1.2mm (.050") 7x7 100'
- 01-0100 Inner Wire 1.5mm (.060") 7x7 100'
- 01-0101 Inner Wire 2.0mm (.080") 1x19 100'
- 01-0102 Inner Wire 2.5mm (.100") 1x19 100'
- 01-0106 Inner Wire 1.5mm 55" 7 x 7 Top = Ball, Bottom = Carb Nipple
- 01-0108 Inner Wire 2.0mm 65" 8 x 10 Top (only) = Barrel
- 01-0111 Universal Throttle Wire 1.2mm 60.5" 7 x 7 Top = Ball

Nylon Lined Housing

- 01-0104 Black Housing 5mm 50' (For 1.5mm wire)
- 01-0105 Black Housing 6mm 50' (For 2.0mm wire)
- 01-0103 Black Housing 7mm 50' (For 2.5mm wire)
- 01-0118 Gray Housing 5mm 50' (For 1.2mm wire)
- 01-0119 Gray Housing 6mm 50' (For 1.5mm wire)
- 01-0120 Gray Housing 7mm 50' (For 2.5mm wire)

Cable Fittings

(Fittings sold in packs of 10)

- | | |
|---|--|
| <ul style="list-style-type: none"> 01-0000 (A) Ball, Throttle Nipple 7/32 for 1.5mm wire 01-0001 (B) Throttle Nipple, Carb End for 1.5mm wire 01-0002 (C) Barrel Nipple 3/8 for 2mm wire 01-0003 (C) Barrel Nipple 5/16 for 2mm wire 01-0004 (D) Cable Housing End 6mm (for 5mm housing) 01-0005 (D) Cable Housing End 7mm (for 6mm housing) 01-0006 (D) Cable Housing End 8mm (for 7mm housing) 01-0007 (E) Pear Nipple (clutch lower) for 2.0mm wire 01-0008 (E) Pear Nipple (clutch lower) for 2.5mm wire 01-0009 (C) Barrel Nipple 5/16 for 2.5mm wire 01-0010 (F) Barrel Nipple 6 X 10mm for 1.5mm wire 01-0011 (F) Barrel Nipple 6 x 7mm for 1.5mm wire | <ul style="list-style-type: none"> 01-0012 (B) Throttle Nipple (short), Carb End, for 1.5mm wire 01-0013 (G) Cable Adjuster Screw, Mikuni carb top 01-0014 (H) Cable Angle Screw, Mikuni carb top 01-0015 (I) Mid Adjuster, 5mm housing 01-0016 Mid Adjuster, 6mm housing (not pictured) 01-0018 Screw-in Adapter for universal cable to Honda CR-type throttle (sold ea. ,not pictured) 01-0019 (K) Carb Top Adapter, Adapts 01-0013 to late-type Honda carb (sold each) 01-0024 (J) Clutch/Front Brake Cable Adjuster, 8mm (sold each) 01-0025 Clutch/Front Brake Cable Adjuster, 9mm (sold each ,not pictured) 01-0026 (L) Mikuni Carb Idle Screw (sold each) 01-0028 (M) Rubber Boot used to cover 01-0013 Mikuni Carb Top Adjuster (sold each) |
|---|--|



01-0014 (H)
Cable Angle Screw, Mukuni carb top



01-0024 (J)
Clutch/FrBrk Cable Adjuster



01-0026 (L)
Mikuni Carb Idle Screw



01-0028 (M)
Rubber Boot

Cable Fittings Kit

01-0055



All in an 18-Compartment Box with label

This is a handy shop kit with the 14 of the most commonly used cable fittings. All fittings can be reordered as individual packets as listed below.

Qty.	Part #	Qty.	Part #
(20)	01-0000	(10)	01-0007
(20)	01-0001	(10)	01-0008
(10)	01-0002	(10)	01-0009
(20)	01-0003	(10)	01-0010
(20)	01-0004	(10)	01-0011
(20)	01-0005	(10)	01-0012
(20)	01-0006	(5)	01-0015



01-0000 (A) Ball-End
01-0007 (E) Pear Nipple
01-0008 (E) Pear Nipple



01-0012 (B) Carb Nipple Short
01-0001 (B) Carb Nipple Long



01-0011 (F) Barrel
01-0010 (F) Barrel



01-0002 (C) Barrel Nipple
01-0003 (C) Barrel Nipple
01-0009 (C) Barrel Nipple



01-0015 (I) Mid Adjuster



01-0004 (D) Cap Housing End
01-0005 (D) Cap Housing End
01-0006 (D) Cap Housing End

Carburetor Caps

Starting with the 1986 models, Honda changed the carburetor cap on some ATV models to incorporate an internal snap ring to lock the cable in place. O.E. Honda cables for these models include the cap with the cable. Once the cable is inserted into the cap, it cannot be removed. The snap ring in the cap clamps onto the square groove in the cable ferrule and it becomes one part. Motion Pro cables also includes the cap with these cables. Motion Pro adapter part number 01-0019 will allow the use of the earlier model Honda cables with 01-0013 adjuster.

Keihin Carburetor Caps

- 01-0020 **Keihin PE 20/24mm carburetors** 25mm cap I.D.
Fits: ATC 110/125/185/200, 1986 and later
- 01-0021 **Keihin PJ 34/36mm carburetors** 43mm cap I.D.
Fits: ATC250R & TRX250R models
- 01-0022 **Keihin PE 26/28mm carburetors** 30mm cap I.D.
Fits: ATC200X, 86-87 models
- 01-0033 **Keihin 13mm carburetors**
Fits: XR50 & CRF50, 00-03 models



01-0022 Keihin Cap

Mikuni Carburetor Caps

- 01-0023 Standard type cap for most Mikuni VM 26-34mm carbs
Used in some Motion Pro Yamaha throttle kits



01-0023 Mikuni Cap



01-0013 (G) Adjuster



01-0019 (K) Adapter

Universal Cables

Universal Use Throttle Cables

Motion Pro Part #	Throttle	Fits Carb	Used in Kit #	Housing Length	Application
01-0241	MAGURA 306	Mikuni 24-28, Keihin PJ 34-38		41.5"	Many Dirt Bikes & ATV's
01-0405	MAGURA 306	Mikuni VM 34-38/TM 36-38, Bing 36-38, Keihin PE 36-38		45.875"	Many Dirt Bikes & ATV's
01-0200	MAGURA 311	Mikuni 36-38, Bing OR Keihin round slide	01-0309	36.375"	Many Dirt Bikes & ATV's
01-0201	01-0057	36-38 Bing 54		40.625"	Many Dirt Bikes & ATV's
01-0406	01-0053/01-0056	Mikuni TM 28-34, Keihin PJ 34-38/PWK 28-39		42"	Many Dirt Bikes & ATV's
01-0411	01-0057	Mikuni TM 28-34, Keihin PJ 34-38/PWK 28-39		41"	Many Dirt Bikes & ATV's
01-0408	01-0060	Mikuni TM 28-34, Keihin PJ 34-38/PWK 28-39		40.75"	Many Dirt Bikes & ATV's
01-0407	01-0053/01-0056	Mikuni TMS/TMX 35-38/TM 36-38/ VM 32-38, Keihin PE 36-38		42"	Many Dirt Bikes & ATV's
01-0409	01-0057	Mikuni TMS/TMX 35-38/TM 36-38/ VM 32-38, Keihin PE 36-39		40.5"	Many Dirt Bikes & ATV's
01-0410	01-0060	Mikuni TMS/TMX 35-38/TM 36-38/ VM 32-38, Keihin PE 36-40		44.625"	Many Dirt Bikes & ATV's
01-0249	01-0057	Mikuni TM 28-34, Keihin PJ 34-38/PWK 28-39	01-0305	44.25"	Many Dirt Bikes & ATV's
01-0249	01-0060	Mikuni VM34-38/TM 38/TMS 35-38, Keihin PE 36-38, Dellorto R/S		44.25"	Many Dirt Bikes & ATV's
01-0807	01-0053/01-0056	Mikuni TM 28-34/VM 34, Keihin PJ 34-38 /PWK 28-39, Lectron 36-38		39.875"	Many Dirt Bikes & ATV's
01-0227	01-0057	Mikuni TM 28-34/VM 34, Keihin PJ 34-38 /PWK 28-39, Lectron 36-38		42"	Many Dirt Bikes & ATV's
01-0817	01-0060	Mikuni TM 28-34/VM 34, Keihin PJ 34-38 /PWK 28-39, Lectron 36-38		39.75"	Many Dirt Bikes & ATV's
01-0671	01-0057	Mikuni TMS/TMX 35-38/TM 36-38		39.75"	Many Dirt Bikes & ATV's, Elbow Carb End
01-0829	01-0060	VM 32-38, Keihin PE 36-38		39.75"	Many Dirt Bikes & ATV's, Elbow Carb End
01-0820	01-0057	Mikuni VM 40-44		39.75"	Many Dirt Bikes & ATV's, Elbow Carb End
01-0819	01-0060	Mikuni VM 40-44		42"	Many Dirt Bikes & ATV's, Elbow Carb End
01-0728	01-0054	Keihin PJ 34-38,PWK 28-39, Mikuni TM28-34		40"	Many Dirt Bikes & ATV's, Elbow Carb End
10-0000	01-0057	Mikuni VM 34-38		34.625"	All Husquvarna with listed carbs
05-0317	01-0073	Mikuni HS 40		34.625"	Many 4-Stroke singles
01-0233	01-0058	Mikuni smooth bore	01-0316	32.5"	Pull - for use W / Mikuni Smooth bore kit
01-0234	01-0058	Mikuni smooth bore	01-0316	32.5"	Push - for use W / Mikuni Smooth bore kit
01-0402	01-0073	Mikuni smooth bore	01-0362	32"	Push - Pull - use W/ Mikuni Smooth bore kit
10-0011	01-0060	Bing 38-40		40.5"	Many vintage applications such as CZ, Maico and Husqvarna
10-0011	01-0057	Mikuni VM 36-38		40.5"	using MP Turbo throttle or Gunner Gasser Whirl-Pull

Universal Use Kits

Fits Carb	Throttle Kit #	Cable	Throttle
Models W/34/40mm E.I., Dellorto, Electron, or 32-38mm Mikuni	01-0303	10-0001	01-0060
Most MX bikes W/Mikuni 36-38mm round slide	01-0308	01-0409	01-0057
ATV W/36-38 Bing/ Keihin/Mikuni carb	01-0309	01-0200	01-0060
Models W/Mikuni smooth bore conv. kit	01-0316	01-0233/01-0234	01-0058
Models W/Mikuni smooth bore conv. kit	01-0362	01-0402	01-0073

Universal Use Throttle Cables

Motion Pro Part #	Throttle	Housing Length	Free Length	Housing size	Top Fitting	Bottom Fitting
01-0106	Inner wire only. Cut off the end not needed. 1.5mm X 55"	---	---	---	BALL	CARB NIPPLE
01-0110	Adjuster; 90 degree elbow carb end	42.5"	6.1"	6mm	BALL	---
01-0202	Extra long all purpose mid adjuster Cut off end not needed	68"	4.4"	5mm	BALL	BBL
01-0203	Throttle or compression release. Ball top with mid adjuster.	40"	2.4"	5mm	BALL	---
01-0205	Solid nylon housing. Extremely light weight and smooth working.	46.3"	1.1"	5mm	BALL	CARB NIPPLE
	Housing may be trimmed with a knife to extend free length.					
01-0222	Solid nylon same as 01-0205 (above) but with mid adjuster.	46.3"	3.1"	5mm	BALL	CARB NIPPLE
01-0403	PUSH-0PULL SET. Use w/ 01-0073 thr.	42"	8.0"	6mm	BBL	---
01-0111	Inner wire only. 1.2mm X 60"	---	---	---	3/16" BALL	---

Universal Use Brake or Clutch Cables

Motion Pro Part #	Throttle	Housing Length	Free Length	Housing size	Top Fitting	Bottom Fitting
01-0108	Inner wire only. 2mm X 65"	---	---	---	BBL	---
01-0109	Inner wire only. 2mm X 72" (Brake)	---	---	---	---	6mm STUD
01-0204	2mm wire, 5/16" with 3/8" adapter top, loose lower.	60"	8.4"	6mm	BBL	---
01-0226	2.5mm wire, 5/16" with 3/8" adapter top, loose lower.	60.2"	8.4"	7mm	BBL	---
01-0423	Inner wire only. 2.5mm X 79"	---	---	---	5/16" BALL	---
07-0068	inner wire only, 3mm X 84.9"	---	---	---	"Harley Eye"	---

Universal Speedometer Cable Kits

01-0107 50" Speedo Cable Kit

01-0112 92" Speedo Cable Kit

- Offered in two lengths: 50" for standard applications and 92" for extended length applications
- Replaces most speedometer cable inner wire (0.125" dia.)
- Includes tips and tools to complete the procedure



Intro to Throttles & Throttle Kits

www.MotionPro.com

At Motion Pro, we never refer to our throttles by fractional names (1/4-turn, 1/2-turn or other any other “turns”). How far a throttle fractionally turns is a function of the throttle’s “rate” (how much cable inner wire the throttle’s drum or cam reels in for every degree of rotation) and the carb’s/throttle body’s travel (how much cable inner wire must be reeled in to fully open the carb(s) or throttle body(ies)). As an example, our fastest throttle, the Vortex, has a rate of 1.90 (the maximum number of degrees turned divided by the maximum travel in mm, 95°/50mm of wire travel). Since it has a maximum of 95° to turn, it will never be much more than a 1/4-turn throttle, but in any application requiring less than 50mm of travel, it will be less than 1/4-turn to fully open. If only 25mm of travel is required, it will be about a 1/8-turn throttle. The opposite of the Vortex is our CR Pro; our slowest single-pull throttle. It has a rate of 2.93, the result of a maximum of 170° turn and 58mm of travel. The rule of rates is simple; the smaller the value of the rate, the faster the throttle will open the carb.

Since we do not know the travel of your carb(s) or throttle body(ies), we will not quote a fractional turn. With careful measurement you can determine the approximate fractional turn required by a given carb and throttle by removing your existing throttle from your existing cable. Carefully measure the exposed inner wire (in millimeters) between the last fitting on the housing (the cap, elbow fitting, or threaded adjuster) and the wire end fitting (usually a ball or barrel). Do not include the wire end fitting in the measurement, only the exposed wire. Write down the measurement, it is your present “throttle free length.” Now pull the inner wire until the carb is fully open against the stop and repeat the measurement. Subtract the throttle free length from the measurement you have just taken; this figure is the carb’s “travel.” Refer to the “rate” of the throttle you are considering. Multiply your carb’s “travel” by the “rate” of the throttle. The result is the approximate number of degrees the throttle will turn to fully open the carb(s).

Notes: Do not consider any single-pull throttle (only one cable used) to replace any push / pull throttle (one pull cable and one return cable). WE WILL NOT build a custom cable to operate a push / pull carb with a single-pull throttle (including ATV thumb throttles). To fully open your carb, the throttle’s maximum travel must be greater than or equal to the carb’s travel or the carb will not fully open. In most cases, your present cable will not work with a throttle of a different rate. Even if the rates are similar, differences in internal design usually require a different free length (the amount of cable inner wire required to reach from the end of the cables housing and housing end fittings to the connection point on the throttle tube’s drum or cam). We calculate free length as a total figure, both the carb’s required free length and the throttle’s required free length are combined to determine the correct cable free length. This, in addition to the varied types of required housing end fittings, is the same reason you may require a special cable when you change your carb to a different size or type.

Part Number	Throttle	Max Twist°	Rate	Max Travel	Free Length	Adjuster Thread	Adjuster	Replacement Throttle Tube	Replacement Wheel	Replacement Mud Cover	Fastener Head
01-0054	VORTEX	95°	1.90	50	60 ¹	8x1.25	01-0024	01-0082	C1-054B	C1-054A	8mm Hex
01-0053	CR Pro	170°	2.93	58	45 ¹	10x1.25	01-0018	01-0087			4mm Allen
01-0056	CR Comp	190°	2.35	81	50 ¹	10x1.25	01-0018	01-0088			5mm Allen
01-0057	TURBO (Std.)	120°	2.30	52	90 ²	8x1	Incl.	01-0089			4mm Allen
	TURBO (w/ Opt. Tube)	150°	2.00	75	90 ²	8x1	Incl.	01-0072			4mm Allen
01-0060	Magura 314 mx	95°	1.90	50	70	None					Slot
	Magura 314 enduro	105°	2.10	50	70						
01-0058	Push/Pull Black	165°	3.67	45	T20/50l	Cable		01-0052			
01-0059	Push/Pull Chrome	165°	3.67	45	T20/50l	Cable		01-0052			
01-0073	Straight Push/Pull	109°	3.00	36	T34/49l	Cable	Cable	01-0090			5mm Allen

¹ All throttle F/L is measured at the end of the threaded adjuster inside the throttle housing. The threaded adjuster must be screwed all the way in, for use with 01-0024 add 10mm, ² F/L measured from cap, Rate = Twist° / mm Travel, Max travel is measured in millimeters (mm)



Motion Pro® is your source for ATV Twist Throttle Conversions!

We offer a wide range of kits for all different styles of ATVs including replacement cables for use with stock throttles and aftermarket carburetors.

We’ve also redesigned our packaging to make it easier to stock, easier to see what is included and more attractive. If you have any throttle kit questions, be sure to let us know; we’ll gladly answer any questions you might have.

Intro to Throttles & Throttle Sleeves

www.MotionPro.com

Vortex™ throttle

Made from die-cast aluminum with a gray finish and gray rubber mud cover OEM-style replacement similar to most late model Japanese MX bikes. Fits KX125/250 92-04, RM125/250 95-04, YZ125 & 250 96-04, & WR250Z 97 with the stock throttle cables.

For Honda CR125 93-02 & CR250 90-03, CR500 90-01, use with Motion Pro® Cable 01-0713. Available for many other models by using a Motion Pro® cable.

01-0054 Vortex Throttle
01-0082 Replacement Sleeve
C1-054A Replacement Mud Cover
C1-054B Replacement Wheel Kit

Included:
Rubber Mud Cover



Turbo™ throttle

Polished die-cast aluminum housing. Opens 28-38mm carburetors. Perfect ratio for off-road motorcycles or ATVs Comes complete with cable adjuster and dust boot. 4 1/2" hand grip. Same cable applications as the "Gasser/Whirlpull" type throttle.

Optional nylon sleeve (01-0072) will fully open carburetors 40mm and larger.

01-0057 Turbo Throttle
01-0089 Replacement Sleeve
01-0072 Optional Nylon Sleeve

CR Competition™ throttle

Die-cast aluminum housing with a black epoxy finish. Opens 30-38mm carburetors. Throttle cable will clear brake master cylinder on handlebar. Uses 4 1/2" throttle sleeve with grip retaining ring. Early disk-brake Honda CR replacement. Motion Pro Cables available for most models.

01-0056 CR Competition™ Throttle
01-0088 Replacement Sleeve
01-0018 Cable Adjuster/ Adapter

CR Pro™ throttle

Die-cast aluminum housing with black epoxy finish. Straight-pull assembly. Recommended for 34mm or smaller straight-pull carburetors. 4 1/2" throttle sleeve with grip retaining ring. Drum Brake Honda CR replacement (pre-84). Motion Pro® cables available for most models

01-0053 CR Pro Black Throttle
01-0071 CR Pro Chrome Throttle
01-0087 Replacement Sleeve
01-0018 Cable Adjuster/ Adapter

New:
CR Pro Chrome
Throttle

Magura® 314 throttle

Reinforced polycarbonate housing. Adjustable turn ratio from MX to Enduro in minutes.

Includes protective rubber cable boot

Opens 28-40mm carburetors. Ideal for off-road motorcycles or ATVs

01-0060 Magura 314 Throttle

Agricultural throttle

Identical in appearance to our CR Pro Throttle with addition of a set screw to hold the throttle position. Allows steady operation during very low speed agricultural use.

Uses the same cables as CR Pro, does not use CR Pro replacement sleeve.

NOT FOR SPORT USE.

01-0063 Agricultural Use Throttle
01-0095 Replacement Sleeve
01-0096 Replacement Screw Kit

Throttle Sleeves

Replaces O.E.M. throttle sleeves

Heavy duty and exceeds the quality and durability of O.E.M. sleeves

Will not scar bars like aluminum sleeves

Nylon fabric composite material

Some models have pop-out end caps for use with bar-end-type hand guards

Molded ridges to help secure grips

One-piece tube and reel design



Levers

www.MotionPro.com

Off-Road & Street Levers

CONTROL LEVERS

Motion Pro® Levers are designed to exceed OEM specifications. We use brass bushings on many models for smooth operation and precise feel. We also offer forged clutch & brake levers with pivot bearings for MX/off-road applications. Built to resist breakage with great style and function. The carbon fiber style is available for many sport bike applications.

QUICK-ADJUST MX CLUTCH LEVER

- Quality 6061-T6 forged aluminum
- Quick-adjuster for on-the-fly adjustments
- Nylon mounting sleeve rotates on impact to protect lever
- Sealed roller bearing in pivot for effortless operation
- Fits all 7/8" bars
- CR ratio

14-0110 Quick-Adjust MX Clutch Lever



QUICK-ADJUST MX CLUTCH LEVER WITH HOT START LEVER

- Quality 6061-T6 forged aluminum
- Quick-adjuster for on-the-fly adjustments
- Roller bearing in pivot for effortless operation
- Fits all 7/8" bars
- CR ratio

14-0111 Quick-Adjust MX Clutch Lever with Hot Start



OE STYLE REPLACEMENT

- Meet or exceed OE quality
- Applications for most models
- Cast aluminum
- Brass pivot bushing in clutch lever pivot for smooth operation



MX FORGED LEVERS

- Quality 6061-T6 forged aluminum for increased strength
- Roller bearing in clutch pivot for effortless operation
- Designed to fit OE perch
- Polished aluminum finish



Roller bearing in clutch pivot



Off-Road & Street Levers



LEVER & PERCH ASSEMBLIES

- Inexpensive replacement for Japanese MX bikes
- Available in black or polished finishes
- Not for use with hydraulic brakes or clutches

Polished

- 14-0102 Honda Clutch Lever Assembly
- 14-0103 Honda Front Cable-Type Brake Lever Assembly
- 14-0106 Kawasaki/Suzuki/Yamaha Clutch Lever Assembly
- 14-0107 Kawasaki/Suzuki/Yamaha Cable-Type Brake Lever Assembly

Black

- 14-0100 Honda Clutch Lever Assembly
- 14-0101 Honda Front Cable-Type Brake Lever Assembly
- 14-0104 Kawasaki/Suzuki/Yamaha Clutch Lever Assembly
- 14-0105 Kawasaki/Suzuki/Yamaha Cable-Type Brake Lever Assembly

OE STYLE REPLACEMENT

- Meet or exceed OE quality
- Applications for most models
- Cast aluminum
- Brass bushing in clutch pivot for smooth operation



CHROME WIDE BLADE LEVERS

- Applications for metric cruisers are available
- Meet or exceed OE quality
- Cast aluminum
- High luster chrome finish



CARBON FIBER STYLE WIDE BLADE LEVERS

- Applications for sportbikes are available
- Meet or exceed OE quality



CHROME WIDE BLADE SKULL-END LEVERS

- Applications for metric cruisers are available
- Meet or exceed OE quality
- Cast aluminum
- High luster chrome finish
- Unique skull design



Black Vinyl Cables

Model	CC	*Cable Foot Length Note	Model Year	Throttle	Throttle PP Set	Throttle Pull	Throttle Push	Choke	Clutch CW	Clutch LW	Decompress	Foot Brake	Front Brake	Hot Start	Rear Hand Brake	Speedo	Tach
JR 50	0050	Std	1978 - 2006	04-0165									04-0166				
RM 60	0060	Std	2003	03-0211					03-0324				03-0205				
RM 65	0065	Std	2003 - 2005	03-0211					03-0332								
DS 80	0080	Std	1985 - 1999	04-0141					04-0142				04-0168				
LT 80	0080	Std	1987 - 2006	04-0111									04-0188				
RM 80	0080	Std	1977 - 1981						04-0078								
RM 80	0080	Std	1982 - 1983	04-0062					04-0079				04-0075				
RM 80	0080	Std	1984 - 1985	04-0105					04-0079				04-0075				
RM 80	0080	Std	1986 - 1988	04-0105					04-0084								
RM 80	0080	Std	1989	04-0105					04-0116	04-0117							
RM 80	0080	Std	1990 - 2001	04-0115					04-0116	04-0117							
RM 85	0085	Std	2002 - 2007	04-0115					04-0116	04-0117							
RM 85L	0085	Std	2007	04-0115													
RV 90	0090	Std	1975 - 1977						04-0086								
TC 90	0090	Std	1970 - 1972														04-0073
DS 100	0100	Std	1978 - 1981						04-0078								
RM 100	0100	Std	1977 - 1978	04-0064					04-0078								
RM 100	0100	Std	1979 - 1980	04-0024					04-0078								
RM 100	0100	Std	1981						04-0078								
RM 100	0100	Std	2003	03-0186					03-0187	03-0188							
TS 100	0100	Std	1978 - 1981						04-0078								
DRZ 110	0110	Std	2003 - 2005	03-0369									03-0370				
DRZ 110	0110	4.0	2003 - 2005	03-0363									03-0205				
ALT 125	0125	Std	1983 - 1986	04-0043											04-0044		
DS 125	0125	Std	1978 - 1981						04-0078								
GN 125E	0125	Std	1991 - 1997														04-0006
LT 125	0125	Std	1983 - 1986	04-0043											04-0044		
LT 125	0125	Std	1987												04-0044		
RM 125	0125	Std	1976	04-0064					04-0078								
RM 125	0125	Std	1977 - 1978	04-0064					04-0078				04-0077				
RM 125	0125	Std	1979 - 1980	04-0024					04-0078				04-0077				
RM 125	0125	Std	1981	04-0024					04-0055								
RM 125	0125	Std	1982	04-0032					04-0055								
RM 125	0125	Std	1983	04-0032					04-0055				04-0038				
RM 125	0125	Std	1984	04-0032					04-0060				04-0056				
RM 125	0125	Std	1985	04-0032					04-0060								
RM 125	0125	Std	1986 - 1987	04-0032					04-0091	04-0100							
RM 125	0125	Std	1988	04-0052					04-0091	04-0100							
RM 125	0125	Std	1989 - 1990	04-0114					04-0091	04-0100							
RM 125	0125	Std	1991 - 1993	04-0114					04-0134	04-0135							
RM 125	0125	Std	1994	04-0140					04-0138	04-0139							
RM 125	0125	Std	1995 - 1997	04-0155					04-0138	04-0139							
RM 125	0125	Std	1998	04-0155					02-0131	02-0206							
RM 125	0125	Std	1999 - 2000	04-0193					02-0131	02-0206							
RM 125	0125	Std	2001 - 2003	04-0208					04-0210								
RM 125	0125	Std	2004 - 2007	04-0208					04-0244								
RV 125	0125	Std	1972	04-0098													
RV 125	0125	Std	1973 - 1977	04-0098					04-0086								
TC 125	0125	Std	1972 - 1975	04-0098					04-0086								
TC 125	0125	Std	1976 - 1977						04-0086								
TS 125	0125	Std	1971 - 1975	04-0098					04-0086								
TS 125	0125	Std	1976 - 1977	04-0098													
TS 125	0125	Std	1978 - 1981	04-0098					04-0078								
LT 160E	0160	Std	1989 - 1992	04-0118				04-0157									
LTF 160	0160	Std	1991 - 2001	04-0118									04-0206				
LTF 160	0160	Std	2002 - 2003										04-0206				
PE 175	0175	Std	1978	04-0064													04-0021
PE 175	0175	Std	1979														04-0021

*Cable Length-number of inches + or -, **CC**- Displacement, **PP**- Set-Push Pull, **CW**- Coil Wound, **LW**- Longitudinally Wound

Black Vinyl Cables

Model	CC	*Cable Foot Length Note	Model Year	Throttle	Throttle PP Set	Throttle Pull	Throttle Push	Choke	Clutch CW	Clutch LW	Decompress	Foot Brake	Front Brake	Hot Start	Rear Hand Brake	Speedo	Tach
RS 175	0175	Std	1980	04-0024					04-0078				04-0077				
RS 175	0175	Std	1981 - 1982	04-0024					04-0078								
ALT 185	0185	Std	1985	04-0043													
DS 185	0185	Std	1978 - 1980						04-0078								
LT 185	0185	Std	1984 - 1986	04-0043											04-0044		
LT 185	0185	Std	1987												04-0044		
TS 185	0185	Std	1971 - 1976	04-0098													
TS 185	0185	Std	1977 - 1981						04-0078								
SP 200	0200	Std	1986 - 1988													04-0120	
T200	0200	Std	1972						04-0000								
LT 230E	0230	Std	1987 - 1993	04-0106				04-0112									
LT 230GE	0230	Std	1985 - 1986	04-0065											04-0071		
LT 230S	0230	Std	1985 - 1988	04-0061					04-0058	04-0101	04-0070				04-0076		
DR 250	0250	Std	1982 - 1983						04-0033								
DR 250	0250	Std	1990 - 1993		04-0130				04-0128	04-0129	04-0187					04-0120	
DR 250S	0250	Std	1990 - 1991						04-0128	04-0129	04-0187					04-0143	
DR 250S	0250	Std	1992		04-0131				04-0128	04-0129	04-0187					04-0143	
DR 250SE	0250	Std	1993		04-0144				04-0128	04-0129						04-0143	
DR 250SE	0250	Std	1994 - 1995		04-0144				04-0058							04-0143	
GN 250	0250	Std	1982 - 1983	04-0004												04-0027	
GN 250	0250	Std	1985	04-0004												04-0027	
GN 250	0250	Std	1988	04-0004												04-0027	
GS 250T	0250	Std	1980 - 1981	04-0012					04-0088							04-0006	04-0007
GT 250	0250	Std	1973 - 1977													04-0186	04-0073
LT 250EF	0250	Std	1985 - 1986	04-0050											04-0051		
LT 250R	0250	Std	1985 - 1986	04-0059					04-0057	04-0102					04-0076		
LT 250R	0250	Std	1987 - 1992	04-0107					04-0057	04-0102							
LT 250S	0250	Std	1989 - 1990	04-0110					04-0058	04-0101							
LT 4WD	0250	Std	1987 - 1989	04-0106				04-0112							04-0159	04-0158	
LT 4WD	0250	Std	1990 - 1996	04-0119				04-0112							04-0159	04-0158	
LTF 250	0250	Std	1988 - 1989					04-0112	04-0110						04-0159		
LTF 250	0250	Std	1990 - 1999	04-0119				04-0112							04-0159		
LTF 250	0250	Std	2000	04-0215				04-0112							04-0159		
LTF 250	0250	Std	2001 - 2002	04-0215											04-0159		
LTF 4WD	0250	Std	1997 - 1998	04-0119				04-0112							04-0159	04-0158	
PE 250	0250	Std	1977													04-0027	
PE 250	0250	Std	1978 - 1981													04-0021	
RL 250	0250	Std	1974 - 1975						04-0000								
RM 250	0250	Std	1976 - 1977	04-0064					04-0078								
RM 250	0250	Std	1978	04-0064					04-0078				04-0077				
RM 250	0250	Std	1979 - 1980	04-0064									04-0077				
RM 250	0250	Std	1981	04-0064					04-0053								
RM 250	0250	Std	1982	04-0034					04-0053								
RM 250	0250	Std	1983	04-0052					04-0053				04-0038				
RM 250	0250	Std	1984	04-0052					04-0054				04-0056				
RM 250	0250	Std	1985	04-0052					04-0054								
RM 250	0250	Std	1986 - 1988	04-0052					04-0091	04-0100							
RM 250	0250	Std	1989	04-0114					04-0091	04-0100							
RM 250	0250	Std	1990 - 1992	04-0114					04-0134	04-0135							
RM 250	0250	Std	1993	04-0137					04-0134	04-0135							
RM 250	0250	Std	1994	04-0137					04-0138	04-0139							
RM 250	0250	Std	1995	04-0156					04-0138	04-0139							
RM 250	0250	Std	1996	04-0156					02-0131	02-0206							
RM 250	0250	Std	1997 - 2000	04-0155					02-0131	02-0206							
RM 250	0250	Std	2001 - 2003	04-0208					04-0210								
RM 250	0250	Std	2004 - 2007	04-0208					04-0244								
RMX 250	0250	Std	1989	04-0114					04-0091	04-0100						04-0143	
RMX 250	0250	Std	1990 - 1992	04-0114					04-0134	04-0135						04-0143	

*Cable Length-number of inches + or -, **CC**- Displacement, **PP- Set**-Push Pull, **CW**- Coil Wound, **LW**- Longitudinally Wound

Black Vinyl Cables

Model	CC	*Cable Foot Length Note	Model Year	Throttle	Throttle PP Set	Throttle Pull	Throttle Push	Choke	Clutch CW	Clutch LW	Decompress	Foot Brake	Front Brake	Hot Start	Rear Hand Brake	Speedo	Tach
RMX 250	0250	Std	1993 - 1998	04-0137					04-0134	04-0135						04-0143	
RMZ 250	0250	Std	2004		03-0348				03-0347					02-0417			
RMZ 250	0250	Std	2005 - 2006		03-0358				03-0359					02-0417			
RMZ 250	0250	Std	2007		04-0266									05-0313			
RS 250	0250	Std	1980									04-0077					
SP 250	0250	Std	1982 - 1985						04-0033								
T250	0250	Std	1972						04-0000								
TM 250	0250	Std	1972						04-0000								
TS 250	0250	Std	1975						04-0000								
LTF 4WDX	0280	Std	1991 - 1998	04-0119				04-0112							04-0159	04-0158	
GS 300L	0300	Std	1982 - 1983	04-0012					04-0088							03-0124	
GS 300L	0300	Std	1984	04-0012					04-0127							03-0124	
LT 300E	0300	Std	1978	04-0061													
LT 300E	0300	Std	1987					04-0112									
LT 300E	0300	Std	1988 - 1989	04-0061				04-0112									
LTF 300F	0300	Std	1999	04-0119				04-0112							04-0159		
LTF 300F	0300	Std	2000 - 2002	04-0215											04-0159		
T305	0305	Std	1972						04-0000								
DR 350	0350	Std	1990 - 1995		04-0130				04-0128	04-0129	04-0187					04-0120	
DR 350	0350	Std	1996		04-0130				04-0128	04-0129	04-0187					04-0133	
DR 350	0350	Std	1998 - 1999		04-0130				04-0128	04-0129	04-0187					04-0133	
DR 350S	0350	Std	1990 - 1991						04-0128	04-0129	04-0187					04-0143	
DR 350S	0350	Std	1992 - 1993		04-0131				04-0128	04-0129	04-0187					04-0143	
DR 350SE	0350	Std	1994 - 1999		04-0144				04-0058	04-0101						04-0143	
T350	0350	Std	1972						04-0000								
DR 370	0370	Std	1978 - 1979													04-0027	
RM 370	0370	Std	1976 - 1977	04-0064					04-0078								
SP 370	0370	Std	1978 - 1979													04-0027	
GT 380	0380	Std	1972						04-0000								04-0073
GT 380	0380	Std	1973 - 1977						04-0000							04-0186	04-0073
DR 400	0400	Std	1980									04-0077					
DRZ 400E	0400	Std	2000 - 2003		04-0196				04-0207							04-0133	
DRZ 400E	0400	Std	2004 - 2006						04-0207							04-0133	
DRZ 400E	0400	Std	023 2004 - 2006		04-0196												
DRZ 400E	0400	Std	024 2004 - 2006		04-0234												
DRZ 400EK	0400	Std	2007						04-0207							04-0133	
DRZ 400EK	0400	Std	023 2007		04-0196												
DRZ 400EK	0400	Std	024 2007		04-0234												
DRZ 400K	0400	Std	2001 - 2004		04-0196				04-0207							04-0133	
DRZ 400S	0400	Std	2000 - 2005		04-0234				04-0207							04-0133	
DRZ 400S	0400	Std	2006 - 2007		04-0234											04-0133	
DRZ 400Y	0400	Std	2000		04-0196				04-0207							04-0133	
GN 400T	0400	Std	1982						04-0090							04-0029	
GN 400X	0400	Std	1980 - 1981						04-0090								
GS 400B	0400	Std	1977						04-0088								04-0007
GS 400C	0400	Std	1978						04-0088								04-0007
GS 400X	0400	Std	1977 - 1978						04-0088								04-0007
LTA 400	0400	Std	2002 - 2004	04-0249													
LTA 400F	0400	Std	2002 - 2006	04-0249													
LTF 400	0400	Std	2002 - 2006	04-0249													
LTF 400F	0400	Std	2002 - 2006	04-0249													
LTZ 400	0400	Std	2003 - 2007	04-0228					04-0232	04-0229							
PE 400	0400	Std	1980 - 1981													04-0021	
RM 400	0400	Std	1978	04-0064					04-0078				04-0077				
RM 400	0400	Std	1979 - 1980	04-0064									04-0077				
SP 400	0400	Std	1980													04-0027	
GS 425L	0425	Std	1979													04-0006	04-0007
GS 450E	0450	Std	1980	04-0004					04-0005							04-0006	04-0007

Foot Notes - 023 - Non CA models only, 24 - CA models only

* Cable Length-number of inches + or -, CC- Displacement, PP- Set-Push Pull, CW- Coil Wound, LW- Longitudinally Wound

Black Vinyl Cables

Model	CC	*Cable Foot Length Note	Model Year	Throttle	Throttle PP Set	Throttle Pull	Throttle Push	Choke	Clutch CW	Clutch LW	Decom press	Foot Brake	Front Brake	Hot Start	Rear Hand Brake	Speedo	Tach
GS 450E	0450	Std	1981 - 1982			04-0036			04-0005							04-0006	04-0007
GS 450E	0450	Std	1983	04-0004					04-0005							04-0021	04-0020
GS 450GA	0450	Std	1982 - 1985	04-0012												04-0021	
GS 450L	0450	Std	1980	04-0012					04-0127							04-0011	04-0025
GS 450L	0450	Std	1981 - 1982	04-0012					04-0127							04-0006	04-0007
GS 450L	0450	Std	1983 - 1988	04-0012					04-0127							04-0021	04-0007
GS 450S	0450	Std	1980 - 1981	04-0004					04-0005							04-0006	04-0007
GS 450T	0450	Std	1981 - 1982	04-0012					04-0088							04-0027	04-0025
GS 450TX	0450	Std	1982	04-0012					04-0088							04-0027	04-0025
GS 450TX	0450	Std	1983	04-0012					04-0088							04-0027	04-0020
LTA 450X	0450	Std	2007	04-0248													
LTR 450	0450	Std	2006 - 2007	04-0258					04-0262	04-0263							
RMZ 450	0450	Std	2005		03-0348				04-0252								
RMZ 450	0450	Std	2006		03-0348				04-0252					04-0254			
RMZ 450	0450	Std	2007		04-0266				04-0252								
RM 465	0465	Std	1981	04-0064					04-0026								
RM 465	0465	Std	1982	04-0034					04-0026								
GS 500E	0500	Std	1989 - 1998	04-0124				04-0163	04-0123							04-0132	04-0025
GS 500E	0500	Std	1999 - 2000	04-0124					04-0123							04-0132	04-0025
GT 500	0500	Std	1976					04-0073									
GT 500	0500	Std	1977													04-0186	04-0073
LT 500R	0500	Std	1987 - 1990	04-0103					04-0104	04-0108							
LTA 500F	0500	Std	2002 - 2003	04-0233													
LTA 500F	0500	Std	2004 - 2006	04-0250													
LTF 500F	0500	Std	1998 - 2000	04-0203											04-0195		
LTF 500F	0500	Std	2004 - 2006	04-0250													
RE 5	0500	Std	1975														04-0073
RE 5	0500	Std	1976													04-0186	04-0073
RM 500	0500	Std	1983 - 1984	04-0052													
SP 500	0500	Std	1981 - 1983									04-0077				04-0027	
T500	0500	Std	1972						04-0000								
GS 550	0550	Std	1983	04-0095					04-0087							04-0081	04-0025
GS 550	0550	Std	1985 - 1986	04-0095					04-0087							04-0081	04-0025
GS 550B	0550	Std	1977						04-0010							04-0027	04-0025
GS 550C	0550	Std	1978						04-0010							04-0027	04-0025
GS 550E	0550	Std	1977						04-0010								
GS 550E	0550	Std	1978 - 1979						04-0010							04-0027	04-0025
GS 550E	0550	Std	1980	04-0012					04-0010							04-0011	04-0025
GS 550E	0550	Std	1983	04-0095					04-0087							04-0081	04-0025
GS 550E	0550	Std	1985 - 1986	04-0095					04-0087							04-0081	04-0025
GS 550ES	0550	Std	1983 - 1986	04-0095					04-0087							04-0081	
GS 550L	0550	Std	1979						04-0089							04-0011	04-0025
GS 550L	0550	Std	1980	04-0012				04-0113	04-0089							04-0011	04-0025
GS 550L	0550	Std	1981	04-0012				04-0113	04-0089							04-0011	04-0007
GS 550L	0550	Std	1982	04-0012					04-0089							04-0040	04-0025
GS 550L	0550	Std	1983 - 1985													04-0082	04-0025
GS 550L	0550	Std	1986														04-0025
GS 550M	0550	Std	1982	04-0004												04-0027	04-0025
GS 550N	0550	Std	1979						04-0010							04-0027	04-0025
GS 550T	0550	Std	1980	04-0012					04-0010							04-0011	
GS 550T	0550	Std	1981	04-0012				04-0113	04-0010							04-0027	04-0025
GT 550	0550	Std	1972 - 1977						04-0000							04-0186	
GSX 600F	0600	Std	1988 - 1989	04-0096				04-0164	04-0121							04-0109	
GSX 600F	0600	Std	1990 - 1997	04-0126				04-0164	04-0121							04-0109	
GSX 600F	0600	Std	1998 - 2003	04-0147					04-0121								
GSXR 600	0600	Std	1997 - 2000			04-0192	04-0191		04-0190							04-0189	
GSXR 600	0600	Std	2001 - 2003			04-0225	04-0226		04-0227								
GSXR 600W	0600	Std	1992 - 1993	04-0147			04-0146	04-0162	04-0153							04-0150	

* Cable Length-number of inches + or -, CC- Displacement, PP- Set-Push Pull, CW- Coil Wound, LW- Longitudinally Wound

Black Vinyl Cables

Model	CC	*Cable Foot Length Note	Model Year	Throttle	Throttle PP Set	Throttle Pull	Throttle Push	Choke	Clutch CW	Clutch LW	Decompress	Foot Brake	Front Brake	Hot Start	Rear Hand Brake	Speedo	Tach
DR 650S	0650	Std	1990 - 1991								04-0187					04-0143	
DR 650S	0650	Std	1992 - 1993		04-0144				04-0151		04-0187					04-0143	
DR 650SE	0650	Std	1994 - 1995		04-0144				04-0151							04-0143	
DR 650SE	0650	Std	1996 - 2001													04-0133	
GR 650X	0650	Std	1983														04-0022
GS 650E	0650	Std	1981	04-0012				04-0113	04-0094							04-0027	04-0025
GS 650E	0650	Std	1982	04-0012					04-0094							04-0027	04-0025
GS 650G	0650	Std	1981	04-0012				04-0113	04-0094							04-0027	04-0025
GS 650G	0650	Std	1982 - 1983	04-0012					04-0094							04-0027	04-0025
GS 650GL	0650	Std	1981	04-0012				04-0113	04-0094							04-0011	
GS 650GL	0650	Std	1982 - 1983	04-0012					04-0094							04-0040	04-0025
GS 650M	0650	Std	1983	04-0004												04-0027	04-0025
SV 650	0650	Std	1999 - 2002			04-0230	04-0231		04-0220								
SV 650S	0650	Std	2003 - 2007		04-0259				04-0260								
XN 85	0673	Std	1983													04-0040	
GS 700E	0700	Std	1985	04-0004					04-0093							04-0082	
GS 700ES	0700	Std	1985	04-0004					04-0093							04-0082	
LTA 700X	0700	Std	2005 - 2007	04-0248													
LTV 700F	0700	Std	2005	03-0350								03-0360			03-0361		
VS 700 GLEF	0700	Std	1986 - 1987													04-0186	
VS 700 GLEP	0700	Std	1986 - 1987	04-0170												04-0186	
VS 700 GLF	0700	Std	1986 - 1987													04-0186	
VS 700 GLP	0700	Std	1986 - 1987	04-0170												04-0186	
GS 750	0750	Std	1977	04-0136					04-0001							04-0027	04-0022
GS 750	0750	Std	1978 - 1979			04-0036			04-0001							04-0027	04-0022
GS 750E	0750	Std	1978 - 1979			04-0036			04-0001							04-0027	04-0022
GS 750E	0750	Std	1980 - 1981	04-0012				04-0113	04-0017							04-0029	04-0025
GS 750E	0750	Std	1982	04-0012					04-0023							04-0040	04-0020
GS 750E	0750	Std	1983	04-0004					04-0093							04-0082	
GS 750ES	0750	Std	1983	04-0004					04-0093							04-0082	
GS 750L	0750	Std	1979	04-0012					04-0001							04-0011	04-0022
GS 750L	0750	Std	1980	04-0012				04-0113	04-0014							04-0029	04-0025
GS 750L	0750	Std	1981	04-0012				04-0113								04-0029	04-0025
GS 750S	0750	Std	1983	04-0004												04-0040	
GS 750T	0750	Std	1982 - 1983	04-0012					04-0023							04-0027	04-0025
GSX 750F	0750	Std	1989 - 1997	04-0126				04-0164	04-0121							04-0109	
GSX 750F	0750	Std	1998 - 2005	04-0147					04-0121								
GSXR 750	0750	Std	1986 - 1987	04-0096												04-0081	
GSXR 750	0750	Std	1988 - 1989	04-0126					04-0122							04-0109	
GSXR 750	0750	Std	1990						04-0152							04-0109	
GSXR 750	0750	Std	1990 - 1992	04-0148													
GSXR 750	0750	Std	1990 - 1992	04-0149													
GSXR 750	0750	Std	1991 - 1992						04-0152							04-0150	
GSXR 750	0750	Std	1993	04-0147			04-0146	04-0162	04-0153							04-0150	
GSXR 750	0750	Std	1994 - 1995	04-0147			04-0146	04-0162	04-0167							04-0150	
GSXR 750	0750	Std	1996 - 1997			04-0192	04-0191	04-0189	04-0190								
GSXR 750	0750	Std	1998 - 1999			04-0204	04-0205		04-0190								
GSXR 750	0750	Std	2000 - 2003			04-0225	04-0226		04-0227								
GSXR 750R LTD	0750	Std	1986	04-0096												04-0081	
GT 750	0750	Std	1972						04-0000								04-0073
GT 750	0750	Std	1973 - 1977						04-0000							04-0186	04-0073
VS 750 GLP	0750	Std	1988 - 1991	04-0170												04-0186	
VS 800GL	0800	Std	1992 - 1994	04-0170												04-0186	
VS 800GL	0800	Std	1995 - 2004													04-0186	
VX 800	0800	Std	1990 - 1994													04-0133	
GS 850G	0850	Std	1979	04-0136					04-0018							04-0006	04-0007
GS 850G	0850	Std	1980 - 1981	04-0012				04-0113	04-0017							04-0021	04-0007
GS 850G	0850	Std	1982 - 1983	04-0012					04-0031							04-0021	04-0022

Foot Notes - **023** - Non CA models only, **24** - CA models only

*Cable Length-number of inches + or -, **CC**- Displacement, **PP**- Set-Push Pull, **CW**- Coil Wound, **LW**- Longitudinally Wound

Black Vinyl Cables

Model	CC	*Cable Foot Length Note	Model Year	Throttle	Throttle PP Set	Throttle Pull	Throttle Push	Choke	Clutch CW	Clutch LW	Decom press	Foot Brake	Front Brake	Hot Start	Rear Hand Brake	Speedo	Tach
GS 850GL	0850	Std	1980	04-0012				04-0113	04-0018							04-0011	04-0020
GS 850GL	0850	Std	1981	04-0012				04-0113	04-0031							04-0011	04-0007
GS 850GL	0850	Std	1982 - 1983	04-0012					04-0031							04-0029	04-0020
GS 1000C	1000	Std	1978	04-0136					04-0017							04-0006	04-0007
GS 1000E	1000	Std	1978 - 1979	04-0136					04-0017							04-0006	04-0007
GS 1000E	1000	Std	1980	04-0012				04-0113	04-0017							04-0021	04-0007
GS 1000G	1000	Std	1980 - 1981	04-0012					04-0031							04-0021	04-0007
GS 1000GL	1000	Std	1980	04-0012					04-0018							04-0011	04-0022
GS 1000GL	1000	Std	1981	04-0012					04-0014							04-0011	04-0007
GS 1000L	1000	Std	1979						04-0017							04-0011	04-0022
GS 1000N	1000	Std	1979	04-0136					04-0017							04-0006	04-0007
GS 1000S	1000	Std	1979					04-0113									04-0007
GS 1000S	1000	Std	1980	04-0004				04-0113								04-0006	04-0007
GS 1000S	1000	Std	1982	04-0004												04-0040	
GSXR 1000	1000	Std	2001 - 2004			04-0225	04-0226		04-0227								
GSXR 1000	1000	Std	2005 - 2006						04-0261								
SV 1000S	1000	Std	2003 - 2007		04-0259												
TL 1000S	1000	Std	1997 - 2001						04-0221								
GS 1100E	1100	Std	1980 - 1981	04-0012				04-0113	04-0023							04-0029	04-0025
GS 1100E	1100	Std	1982 - 1983			04-0036			04-0023							04-0021	04-0007
GS 1100ES	1100	Std	1983	04-0004					04-0023							04-0040	
GS 1100G	1100	Std	1982 - 1983	04-0012					04-0031							04-0021	04-0022
GS 1100GK	1100	Std	1982 - 1984	04-0012					04-0031							04-0021	04-0022
GS 1100GL	1100	Std	1982 - 1983	04-0012					04-0031							04-0029	04-0020
GS 1100L	1100	Std	1980	04-0012				04-0113	04-0014							04-0011	04-0025
GS 1100S	1100	Std	1983	04-0004												04-0040	
GSX 1100F	1100	Std	1988 - 1993	04-0096												04-0120	
GSX 1100G	1100	Std	1991	04-0012													
GSXR 1100	1100	Std	1986 - 1988	04-0096												04-0081	
GSXR 1100	1100	Std	1989 - 1990	04-0126												04-0109	
GSXR 1100	1100	Std	1991 - 1992	04-0149												04-0150	
GSXR 1100	1100	Std	1993 - 1998	04-0147			04-0146	04-0162								04-0150	
GS 1150E	1150	Std	1985 - 1986	04-0004					04-0023							04-0082	
GS 1150ES	1150	Std	1983 - 1985	04-0004												04-0082	
GSF 1200S	1200	Std	2001 - 2002			04-0212	04-0213										
GSX 1300R	1300	Std	1999 - 2001			04-0218	04-0219										
VS 1400GLF	1400	Std	1987													04-0186	
VS 1400GLP	1400	Std	1987 - 1994	04-0178												04-0186	
VS 1400GLP	1400	Std	1995 - 2003			04-0182										04-0186	
VS 1400GLP	1400	6.0	1995 - 2003	04-0183													

* Cable Length-number of inches + or -, CC- Displacement, PP- Set-Push Pull, CW- Coil Wound, LW- Longitudinally Wound

Black Vinyl Special - Street Cables

Model	CC	Carb	Foot Note	Model Year	Throttle Pull	Throttle Push
GSXR 1100	1100	Keihin FCR	011	1993 - 1998	01-0871	01-0872
GSXR 600	0600	Keihin FCR	011	1992 - 1993	01-0871	01-0872
GSXR 750	0750	Keihin FCR	011	1993 - 1995	01-0871	01-0872
GSXR 750	0750	Keihin FCR 41	011	1996 - 1997	01-0666	01-0665
RF 600R	0600	Keihin FCR	011	1994	01-0894	01-0895
RF 900R	0900	Keihin FCR	011	1994 - 1995	01-0894	01-0895
SV 650	0650	Dual Keihin FCR	011	1999 - 2002	01-0726	01-0727

Black Vinyl Special - Off-Road Cables

Model	CC	Carb	Model Year	Throttle BV
RM 125	0125	Mikuni TM 34-36, PWK 35	1982 - 1988	04-0114
RM 125	0125	Keihin PJ 34-36, PWK 35	1982 - 1993	04-0140
RM 125	0125	Keihin PE 36-38, Mikuni TMS 38, TMX 38, VM 36-38	1982 - 1994	04-0052
RM 125	0125	Keihin PJ 38, PWK 38-39	1982 - 1994	04-0156
RM 125	0125	Mikuni TM 34-36, PWK 35	1994	04-0114
LT 250R	0250	Keihin PJ 34-36, PWK 35	1985 - 1992	01-0893
RM 250	0250	Keihin PE 36-38, Mikuni TMS 38, TMX 38, VM 36-38	1982	04-0052
RM 250	0250	Keihin PJ 34-36, PWK 35	1982 - 1992	04-0140
RM 250	0250	Keihin PJ 38, PWK 38-39	1982 - 1992	04-0156
RM 250	0250	Mikuni TM 34-36, PWK 35	1988	04-0114
RM 250	0250	Keihin PE 36-38, Mikuni TMS 38, TMX 38, VM 36-38	1989 - 1994	04-0052
RM 250	0250	Mikuni TM 34-36, PWK 35	1993 - 1994	04-0114
RMX 250	0250	Keihin PE 36-38, Mikuni TMS 38, TMX 38, VM 36-38	1989 - 1998	04-0052
RMX 250	0250	Keihin PJ 34-36, PWK 35	1989 - 1998	04-0140
RMX 250	0250	Keihin PJ 38, PWK 38-39	1989 - 1998	04-0156
RMX 250	0250	Mikuni TM 34-38	1993 - 1998	04-0114
RM 465	0465	Keihin PE 36-38, Mikuni TMS 38, TMX 38, VM 36-38	1982	04-0052
RM 465	0465	Keihin PJ 34-36, PWK 35	1982	04-0140
RM 465	0465	Keihin PJ 38, PWK 38-39	1982	04-0156
RM 500	0500	Keihin PJ 34-36, PWK 35	1983 - 1984	04-0140
RM 500	0500	Keihin PJ 38, PWK 38-39	1983 - 1984	04-0156

Armor Coat Cables

Model	Name	CC	*Cable Length	Model Year	Throttle	Throttle Pull	Throttle Push	Choke	Speedo
VS 700 GLEP	Intruder	0700	Std	1986 - 1987	64-0172				64-0169
VS 700 GLEP	Intruder	0700	6.0	1986 - 1987	64-0173				
VS 700 GLP	Intruder	0700	Std	1986 - 1987	64-0172				64-0169
VS 700 GLP	Intruder	0700	6.0	1986 - 1987	64-0173				
VS 750 GLP	Intruder	0750	Std	1988 - 1991	64-0172				64-0169
VS 750 GLP	Intruder	0750	6.0	1988 - 1991	64-0173				
VL 800	Volusia	0800	Std	2001 - 2004		64-0228	64-0229	64-0230	
VL 800	Volusia	0800	6.0	2001 - 2004		64-0225	64-0226	64-0227	
VL 800 C50	Boulevard C50 Volusia	0800	Std	2005 - 2006		64-0235	64-0236	64-0230	
VL 800 C50	Boulevard C50 Volusia	0800	6.0	2005 - 2006		64-0237	64-0238	64-0227	
VS 800GL	Intruder	0800	Std	1992 - 1994	64-0172				64-0169
VS 800GL	Intruder	0800	6.0	1992 - 1994	64-0173				
VS 800GL	Intruder	0800	Std	1995 - 2004	64-0176				64-0169
VS 800GL	Intruder	0800	6.0	1995 - 2004	64-0177				
VZ 800	Marauder	0800	Std	1998 - 2003		64-0222	64-0223	64-0224	
VZ 800	Marauder	0800	Std	2004		64-0222	64-0223		
VS 1400GLF	Intruder	1400	Std	1987					64-0169
VS 1400GLP	Intruder	1400	Std	1987 - 1994					64-0169
VS 1400GLP	Intruder	1400	Std	1995 - 2004	64-0184				64-0169
VS 1400GLP (S83)	Boulevard S83	1400	Std	2005 - 2006					64-0169
VL 1500LC	Intruder	1500	Std	1998 - 2004		64-0216	64-0217		
VL 1500LC	Intruder	1500	6.0	1998 - 2004		64-0218	64-0219		
VL 1500LC C90	Boulevard C90	1500	Std	2005 - 2006		64-0231	64-0232		
VL 1500LC C90	Boulevard C90	1500	6.0	2005 - 2006		64-0233	64-0234		
VZ 1600	Marauder	1600	Std	2004		63-0330	63-0331		

*Cable Length-number of inches + or -, CC- Displacement

T-2 Gray Cables – Off-Road

Model	CC	*Cable Length	Foot Note	Model Year	Cable Kit	Throttle	Throttle PP Set	Clutch LW	Hot Start
RM 125	0125	Std		1995 - 1997		04-0201		04-0202	
RM 125	0125	Std		1998	01-2550	04-0201		02-0402	
RM 125	0125	Std		1999 - 2000	01-2547	04-0199		02-0402	
RM 125	0125	Std		2001 - 2003	01-2548	04-0255		04-0211	
RM 125	0125	Std		2004 - 2007	01-2549	04-0255		04-0243	
RM 250	0250	Std		1995		04-0200		04-0202	
RM 250	0250	Std		1996		04-0200		02-0402	
RM 250	0250	Std		1997 - 2000	01-2550	04-0201		02-0402	
RM 250	0250	Std		2001 - 2003	01-2548	04-0255		04-0211	
RM 250	0250	Std		2004 - 2007	01-2549	04-0255		04-0243	
RMZ 250	0250	Std		2004	01-2544		03-0345	03-0344	02-0416
RMZ 250	0250	Std		2005 - 2006	01-2552		03-0354	03-0355	02-0416
RMZ 250	0250	Std		2007			04-0267		05-0330
DRZ 400E	0400	Std		2000 - 2003			04-0197	04-0198	
DRZ 400E	0400	Std		2004 - 2005				04-0198	
DRZ 400E	0400	Std	023	2004 - 2006			04-0197		
DRZ 400K	0400	Std		2001 - 2003	01-2553		04-0197	04-0198	
DRZ 400K	0400	Std	023	2004	01-2553		04-0197	04-0198	
DRZ 400Y	0400	Std		2000	01-2553		04-0197	04-0198	
RMZ 450	0450	Std		2005	01-2565		03-0345	04-0251	
RMZ 450	0450	Std		2006	01-2551		03-0345	04-0251	04-0253
RMZ 450	0450	Std		2007			04-0267	04-0251	04-0253



T-2 Gray Cables – Sport Bike

Model	CC	*Cable Length	Model Year	Cable Kit	T2 Throttle Pull	T2 Throttle Push	Clutch LW
GSXR 600	0600	Std	1997 - 2000	01-0592	04-0238	04-0239	04-0240
GSXR 600	0600	Std	2001 - 2003	01-2500	04-0235	04-0236	04-0237
GSXR 600	0600	Std	2004 - 2005	01-2521	04-0245	04-0246	04-0247
GSXR 750	0750	Std	1996 - 1997	01-0592	04-0238	04-0239	04-0240
GSXR 750	0750	Std	1998 - 1999	01-0587	04-0241	04-0242	04-0240
GSXR 750	0750	Std	2000 - 2003	01-2500	04-0235	04-0236	04-0237
GSXR 750	0750	Std	2004 - 2005	01-2521	04-0245	04-0246	04-0247
GSXR 1000	1000	Std	2001 - 2004	01-2500	04-0235	04-0236	04-0237
GSXR 1000	1000	Std	2005 - 2006	01-2571	04-0245	04-0256	04-0257

Foot Notes - 023 - Non CA models only

* Cable Length-number of inches + or -, CC- Displacement, PP- Set-Push Pull, LW- Longitudinally Wound

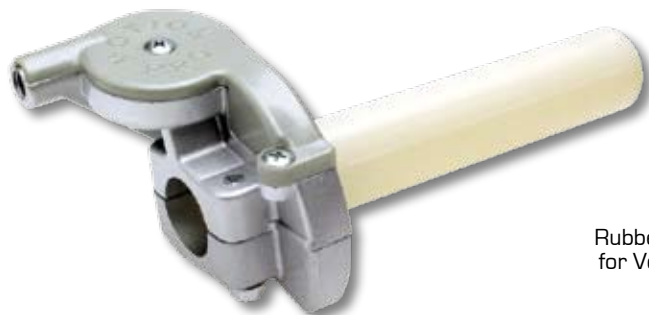
Twist Throttle Kits

Model	CC	Carb	Foot Note	Model Year	Agri cultural	CR Comp	CR Pro	Magura 314	Turbo BV	Vortex BV	Vortex T2
LT 80	0080	Stock		1987 - 2006			01-0329				
RM 80	0080	Stock	027	1990 - 2001							01-2583
RM 85	0085	Stock	027	2002 - 2007							01-2583
ALT 125	0125	Stock		1983 - 1986	01-0548		01-0384				
LT 125	0125	Stock		1983 - 1987	01-0548		01-0384				
RM 125	0125	Stock		1982 - 1993		01-0347		01-0354	01-0327		
LT 160E	0160	Stock		1989 - 1992	01-0549		01-0374				
LTF 160	0160	Stock	023	1991 - 1997	01-0549		01-0374				
LTF 160	0160	Stock		1998 - 2000	01-0549		01-0374				
ALT 185	0185	Stock		1985	01-0548		01-0384				
LT 185	0185	Stock		1984 - 1987			01-0384				
LT 230E	0230	Stock		1987 - 1993	01-0550	01-0347		01-0354	01-0327		
LT 230S	0230	Stock		1985 - 1988		01-0347		01-0354	01-0327		
LT 250E	0250	Stock		1987 - 1991	01-0550	01-0347		01-0354	01-0327		
LT 250R	0250	Stock		1985 - 1992						01-0510	
LT 250R	0250	Stock, Keihin PJ 34-38, PWK 28-39, Mikuni TM 28-34		1985 - 1992		01-0347		01-0354	01-0327		
LT 250R	0250	Keihin PJ 34-38, PWK 28-39, Mikuni TM 28-35		1987 - 1990						01-0515	
LT 250S	0250	Stock		1989 - 1990		01-0347		01-0354	01-0327		
LT 4WD	0250	Stock		1987 - 1989		01-0347		01-0354	01-0327		
LT 4WD	0250	Stock		1990 - 1996	01-0550					01-0360	
LTF 250	0250	Stock		1988 - 1989		01-0347		01-0354	01-0327		
LTF 250	0250	Stock		1990 - 1999	01-0550				01-0360		
LTF 250	0250	Stock		2000 - 2001			01-0568				
LTF 250	0250	Stock		2002 - 2005			01-0569				
LTF 4WD	0250	Stock		1991 - 1998					01-0360		
LTZ 250	0250	Stock		2003 - 2007			01-0567		01-0578	01-0577	
RM 250	0250	Stock		1988 - 1992		01-0347		01-0354	01-0327		
RMX 250	0250	Stock		1989 - 1992		01-0347		01-0354	01-0327		
LT 300E	0300	Stock		1987 - 1989	01-0550	01-0347		01-0354	01-0327		
LTF 300F	0300	Stock		1999					01-0360		
LTF 300F	0300	Stock		2002			01-0568				
LTA 400	0400	Stock		2002 - 2004	01-0558		01-0555		01-0557	01-0556	
LTA 400F	0400	Stock		2002 - 2006	01-0558		01-0555		01-0557	01-0556	
LTF 400	0400	Stock		2002 - 2006	01-0558		01-0555		01-0557	01-0556	
LTF 400F	0400	Stock		2002 - 2006	01-0558		01-0555		01-0557	01-0556	
LTZ 400	0400	Stock		2003 - 2007			01-0563		01-0570	01-0562	
LTA 450X	0450	Stock	019	2007			01-2526				
LTR 450	0450	Stock		2006 - 2007			01-2575				
LTR 450	0450	Stock	031	2006 - 2007						01-2581	
LT 500R	0500	Stock		1987 - 1990		01-0331			01-0330		
LT 500R	0500	Stock, Keihin PJ 34-38, PWK 28-39, Mikuni TM 28-34		1987 - 1990		01-0347		01-0354	01-0327	01-0515	
LTF 500F	0500	Stock		1998 - 2000	01-0551	01-0505			01-0399		
LTF 500F	0500	Stock	019	2005 - 2007			01-2574				
LTA 700X	0700	Stock	019	2005 - 2006			01-2526				

Foot Notes - **019** - 4WD switch relocation kit included, **023** - Non CA models only, **027** - T2 Gray cable
031 - For use on closed circuit dirt track racing by expert riders only. This throttle kit provides very limited throttle control.
 * Cable Length-number of inches + or -, **CC**- Displacement, **BV**- Black Vinyl

Cables for Vortex™ Throttle

Model	CC	Carb	Model Year	BV Throttle Cable	T2 Throttle Cable
RM 80	0080	Stock	1990 - 2001		01-1047
RM 85	0085	Stock	2002 - 2007		01-1047
LT 250R	0250	Stock	1985 - 1992	01-0721	
LT 250R	0250	Keihin PJ 34-38, PWK 28-39, Mikuni TM 28-34	1987 - 1990	01-0728	
LTZ 250	0250	Stock	2003 - 2007	01-0470	
LTA 400	0400		2002 - 2004	01-0839	
LTA 400F	0400		2002 - 2006	01-0839	
LTF 400	0400	Stock	2002	01-0839	
LTF 400	0400		2003 - 2006	01-0839	
LTF 400F	0400	Stock	2002	01-0839	
LTF 400F	0400		2003 - 2006	01-0839	
LTZ 400	0400	Stock	2003 - 2007	01-0458	
LTR 450	0450	Stock	2006 - 2007	01-1038	
LT 500R	0500	Stock, Keihin PJ 34-38, PWK 28-39, Mikuni TM 28-34	1987 - 1990	01-0728	



Included:
Rubber Mud Cover
for Vortex Throttle



Vortex™ Throttle
01-0054

Cables for Turbo™ Throttle

Model	CC	Carb	Model Year	BV Throttle Cable
RM 125	0125	Stock	1982 - 1993	01-0227
RM 125	0125	Stock	1994 - 1998	01-0817
LT 230E	0230	Stock	1985 - 1993	01-0227
LT 250E	0250	Stock	1987 - 1991	01-0227
LT 250R	0250	Keihin PE 36-38, Mikuni TM 36-38, TMS 35-38, TMX 35-38, VM 32-38	1985 - 1992	01-0671
LT 250R	0250	Stock, Keihin PJ 34-38, PWK 28-39, Mikuni TM 28-34	1985 - 1992	01-0227
LT 250S	0250	Stock	1989 - 1990	01-0227
LT 4WD	0250	Stock	1987 - 1989	01-0227
LT 4WD	0250	Stock	1990 - 1996	01-0853
LTF 250	0250	Stock	1988 - 1989	01-0227
LTF 250	0250	Stock	1990 - 1999	01-0853
LTF 4WD	0250	Stock	1997 - 1998	01-0853
LTZ 250	0250	Stock	2003 - 2007	01-0471
RM 250	0250	Stock	1982 - 1987	01-0671
RM 250	0250	Stock	1988 - 1992	01-0227
RMX 250	0250	Stock	1989 - 1992	01-0227
LTF 4WDX	0280	Stock	1991 - 1998	01-0853
LT 300E	0300	Stock	1987 - 1989	01-0227
LTF 300F	0300	Stock	1999	01-0853
LTA 400	0400	Stock	2002 - 2004	01-0840
LTA 400F	0400	Stock	2002 - 2006	01-0840
LTF 400	0400	Stock	2002 - 2006	01-0840
LTF 400F	0400	Stock	2002 - 2006	01-0840
LTZ 400	0400	Stock	2003 - 2007	01-0745
RM 465	0465	Stock	1982	01-0671
LT 500R	0500	Keihin PE 36-38, Mikuni TM 36-38, TMS 35-38, TMX 35-38, VM 32-38	1987 - 1990	01-0671
LT 500R	0500	Keihin PJ 34-38, PWK 28-39, Mikuni TM 28-34	1987 - 1990	01-0227
LT 500R	0500	Stock	1987 - 1990	01-0247
LTF 500F	0500	Stock	1998 - 2000	01-0700
RM 500	0500	Stock	1983 - 1984	01-0671



Turbo™ Throttle
01-0057

Cables for Magura® Throttle

Model	CC	Carb	Model Year	BV Throttle Cable
RM 125	0125	Stock	1982 - 1993	01-0817
LT 230E	0230	Stock	1987 - 1993	01-0817
LT 230S	0230	Stock	1985 - 1988	01-0817
LT 250E	0250	Stock	1987 - 1991	01-0817
LT 250R	0250	Keihin PE 36-38, Mikuni TM 36-38, TMS 35-38, TMX 35-38, VM 32-38	1985 - 1992	01-0829
LT 250R	0250	Stock, Keihin PJ 34-38, PWK 28-39, Mikuni TM 28-34	1985 - 1992	01-0817
LT 250S	0250	Stock	1989 - 1990	01-0817
LT 4WD	0250	Stock	1987 - 1989	01-0817
RM 250	0250	Stock	1982 - 1987	01-0829
RM 250	0250	Stock	1988 - 1992	01-0817
RMX 250	0250	Stock	1989 - 1992	01-0817
LT 300E	0300	Stock	1987 - 1989	01-0817
RM 465	0465	Stock	1982	01-0829
LT 500R	0500	Keihin PE 36-38, Mikuni TM 36-38, TMS 35-38, TMX 35-38, VM 32-38	1987 - 1990	01-0829
LT 500R	0500	Stock, Keihin PJ 34-38, PWK 28-39, Mikuni TM 28-34	1987 - 1990	01-0817
RM 500	0500	Stock	1983 - 1984	01-0829



Magura® 314
01-0060

Cables for CR-Comp, CR-Pro and Agricultural (Ag) Throttles

Model	CC	Carb	Model Year	BV Throttle Cable
LT 80	0080	Stock	1987 - 2003	02-0036
ALT 125	0125	Stock	1983 - 1986	01-0625
LT 125	0125	Stock	1983 - 1987	01-0625
RM 125	0125	Stock	1982 - 1993	01-0807
LT 160E	0160	Stock	1989 - 1997	01-0876
LTF 160	0160	Stock	1991 - 2000	01-0876
ALT 185	0185	Stock	1985	01-0625
LT 185	0185	Stock	1984 - 1987	01-0625
LT 230E	0230	Stock	1987 - 1993	01-0807
LT 230S	0230	Stock	1985 - 1988	01-0807
LT 250E	0250	Stock	1987 - 1991	01-0807
LT 250R	0250	Keihin PJ 34-38, PWK 28-39, Mikuni TM 28-34	1985 - 1992	01-0807
LT 250R	0250	Stock	1985 - 1992	02-0247
LT 250S	0250	Stock	1989 - 1990	01-0807
LT 4WD	0250	Stock	1987 - 1989	01-0807
LTF 250	0250	Stock	1988 - 1989	01-0807
LTF 250	0250	Stock	2000 - 2001	01-0463
LTF 250	0250	Stock	2002 - 2005	01-0464

Cables for CR-Comp, CR-Pro and Agricultural (Ag) Throttles

Model	CC	Carb	Model Year	BV Throttle Cable
LTZ 250	0250	Stock	2003 - 2007	01-0469
RM 250	0250	Stock	1988 - 1992	01-0807
RMX 250	0250	Stock	1989 - 1992	01-0807
LT 300E	0300	Stock	1987 - 1989	01-0807
LTF 300F	0300	Stock	2002	01-0463
LTA 400	0400	Stock	2002 - 2004	01-0837
LTA 400F	0400	Stock	2002 - 2006	01-0837
LTF 400	0400	Stock	2002 - 2006	01-0837
LTF 400F	0400	Stock	2002 - 2006	01-0837
LTZ 400	0400	Stock	2003 - 2007	01-0459
LTA 450X	0450	Stock	2007	01-1022
LTR 450	0450	Stock	2006 - 2007	01-1034
LT 500R	0500	Keihin PJ 34-38, PWK 28-39, Mikuni TM 28-34	1987 - 1990	01-0807
LT 500R	0500	Stock	1987 - 1990	01-0228
LTF 500F	0500	Stock	1998 - 2000	01-0712
LTF 500F	0500	Stock	2005 - 2006	01-1033
LTA 700X	0700	Stock	2005 - 2006	01-1022

CR Competition™ Throttle
01-0056



CR Pro™ Chrome Throttle
01-0071



CR Pro™ Black Throttle
01-0053



Agricultural (AG) Throttle
01-0057



Straight Push-Pull Throttle

Model	CC	Carb	Model Year	BV Throttle Cable PP
DR 250	0250	Mikuni HS 40	1990 - 1993	05-0317
DR 350	0350	Mikuni HS 40	1991 - 1996	05-0317
DR 350S	0350	Mikuni HS 40	1991 - 1996	05-0317

Straight Push-Pull Throttle
01-0073



Throttle Sleeves

Model	CC	Model Year	Pop-Out End
RM 65	0065	2003 - 2005	01-0092
RM 80	0080	1982 - 2001	01-0086
RM 85	0085	2002 - 2007	01-0086
RM 100	0100	2003	01-0092
DRZ 110	0110	2003 - 2005	01-0092
DRZ 125	0125	2003 - 2007	01-0086
DRZ 125L	0125	2003 - 2007	01-0086
RM 125	0125	1982 - 1986	01-0086
RM 125	0125	1987 - 1994	01-0084
RM 125	0125	1995 - 2007	01-0082
PE 175	0175	1984	01-0084
DRZ 250	0250	2000 - 2005	01-0093
RM 250	0250	1982 - 1994	01-0084
RM 250	0250	1995 - 2007	01-0082
RMX 250	0250	1989 - 1998	01-0084
RMZ 250	0250	2004 - 2007	01-0094
DR 350	0350	1998	01-0093
DR 350S	0350	1992 - 1993	01-0093
DR 350SE	0350	1994 - 1998	01-0093
DRZ 400E	0400	2000 - 2006	01-0093
DRZ 400EK	0400	2007	01-0093
DRZ 400K	0400	2001 - 2004	01-0093
DRZ 400S	0400	2000 - 2006	01-0093
DRZ 400SM	0400	2005 - 2007	01-0093
DRZ 400Y	0400	2000	01-0093
RMZ 450	0450	2005 - 2007	01-0094
RM 465	0465	1982	01-0084
RM 500	0500	1983 - 1984	01-0084
SP 600	0600	1985	01-0086



OE Style Replacement Levers

Model	CC	Model Year	Black L-Hand	Black R-Hand	Polished L-Hand	Polished R-Hand	Model	CC	Model Year	Black L-Hand	Black R-Hand	Polished L-Hand	Polished R-Hand
JR 50	0050	1978 - 2006				14-0425	LTF 250	0250	1990			14-0410	
RB 50	0050	1987		14-0407			LTF 250	0250	1991 - 1993	14-0421	14-0407		
RM 65	0065	2003 - 2005			14-0310	14-0329	LTF 250	0250	1994 - 2001	14-0421	14-0422		
RM 80	0080	1982 - 1985			14-0404	14-0506	LTF 250	0250	2002 - 2003		14-0422		
RM 80	0080	1986 - 1995			14-0404		LTF 4WD	0250	1997 - 1998	14-0421	14-0422		
RM 80	0080	1996 - 2001			14-0404	14-0318	LTZ 250	0250	2003 - 2005		14-0422		
RM 85	0085	2002 - 2004			14-0404	14-0318	RM 250	0250	1982 - 1984			14-0404	14-0506
RM 85	0085	2005 - 2007			14-0405	14-0329	RM 250	0250	1985 - 1991			14-0404	14-0318
DR 100	0100	1990			14-0404		RM 250	0250	1992 - 1995			14-0405	14-0318
DS 100	0100	1980 - 1981			14-0404	14-0506	RM 250	0250	1996	14-0503	14-0204		
RM 100	0100	2003			14-0310	14-0329	RM 250	0250	1997 - 2003			14-0405	14-0218
TS 100	0100	1980 - 1981			14-0404		RM 250	0250	2004 - 2007			14-0405	14-0329
DRZ 110	0110	2003 - 2006				14-0333	RMX 250	0250	1989 - 1998			14-0404	14-0318
DR 125	0125	1986 - 1987		14-0407			RMZ 250	0250	2004			14-0310	
DR 125SE	0125	1994 - 1996			14-0401	14-0408	RMZ 250	0250	2005 - 2006			14-0525	14-0329
DRZ 125	0125	2003 - 2007			14-0404	14-0506	RMZ 250	0250	2007				14-0329
DRZ 125L	0125	2003 - 2007			14-0404	14-0318	TS 250	0250	1980 - 1981			14-0404	
DS 125	0125	1980 - 1981			14-0404	14-0506	LTF 4WDX	0280	1994 - 1996	14-0421			
GN 125E	0125	1991 - 1997		14-0407			LTF 4WDX	0280	1997 - 1998	14-0421	14-0422		
RM 125	0125	1982 - 1984			14-0404	14-0506	GS 300L	0300	1982 - 1983	14-0400			
RM 125	0125	1985 - 1991			14-0404	14-0318	GS 300L	0300	1985	14-0400			
RM 125	0125	1992 - 1995			14-0405	14-0318	LT 300E	0300	1987 - 1989		14-0410		
RM 125	0125	1996	14-0503	14-0204			LT 300F	0300	1999 - 2002	14-0421	14-0422		
RM 125	0125	1997 - 2003			14-0405	14-0218	LT 300S	0300	1987 - 1989		14-0410		
RM 125	0125	2004 - 2007			14-0405	14-0329	DR 350	0350	1990 - 2000			14-0404	14-0318
SP 125	0125	1986		14-0407			DR 350S	0350	1990 - 1993			14-0404	14-0408
SP 125	0125	1987 - 1988		14-0407	14-0404		DR 350SE	0350	1994 - 2000			14-0401	14-0408
TS 125	0125	1980 - 1981			14-0404		DR 400	0400	1980			14-0404	14-0506
DS 185	0185	1980			14-0404	14-0506	DRZ 400E	0400	2000 - 2006			14-0419	14-0218
TS 185	0185	1980 - 1981			14-0404		DRZ 400EK	0400	2007			14-0419	14-0218
DR 200	0200	1986 - 1987		14-0407			DRZ 400K	0400	2001 - 2004			14-0404	14-0218
DR 200SE	0200	1996 - 2005			14-0401	14-0408	DRZ 400S	0400	2000 - 2006			14-0419	14-0428
SP 200	0200	1986		14-0407			DRZ 400S	0400	2007				14-0428
SP 200	0200	1987 - 1988		14-0407	14-0404		DRZ 400SM	0400	2005 - 2006			14-0419	14-0428
LT 230E	0230	1987 - 1990	14-0420	14-0410			DRZ 400SM	0400	2007				14-0428
LT 230E	0230	1991 - 1993	14-0420	14-0407			DRZ 400Y	0400	2000			14-0404	14-0218
LT 230GE	0230	1985 - 1986	14-0421	14-0410			GN 400	0400	1980			14-0404	14-0409
LT 230S	0230	1985 - 1988	14-0420	14-0410			GN 400T	0400	1981			14-0404	14-0409
LTF 230	0230	1986 - 1987	14-0421	14-0410			GN 400T	0400	1982		14-0410		
DR 250	0250	1990 - 1993			14-0404	14-0318	GN 400X	0400	1980 - 1981			14-0404	14-0409
DR 250S	0250	1990 - 1992			14-0404	14-0408	GSF 400	0400	1991 - 1993			14-0401	14-0411
DR 250SE	0250	1993 - 1994			14-0401	14-0408	LTA 400	0400	2002 - 2004		14-0422		
DRZ 250	0250	2000 - 2005			14-0419	14-0318	LTA 400F	0400	2002 - 2006		14-0422		
DS 250	0250	1980			14-0404		LTF 400	0400	2002 - 2006		14-0422		
GN 250	0250	1982 - 1983	14-0400				LTF 400F	0400	2002 - 2006		14-0422		
GN 250	0250	1985	14-0400				LTZ 400	0400	2003	14-0504			
GN 250	0250	1988	14-0400	14-0410			LTZ 400	0400	2004 - 2007	14-0504	14-0422		
GS 250T	0250	1980 - 1981	14-0400	14-0410			SP 400	0400	1980			14-0404	
GZ 250	0250	1999 - 2001			14-0414	14-0411	GS 425L	0425	1979	14-0400	14-0410		
LT 250EF	0250	1985 - 1986	14-0421	14-0410			GS 450E	0450	1980 - 1983	14-0400	14-0410		
LT 250R	0250	1991 - 1992	14-0420	14-0407			GS 450GA	0450	1982 - 1983		14-0410		
LT 250S	0250	1989 - 1990	14-0420	14-0410			GS 450GA	0450	1985		14-0410		
LT 4WD	0250	1989 - 1990	14-0421	14-0410			GS 450L	0450	1980 - 1983	14-0400	14-0410		
LT 4WD	0250	1991 - 1993	14-0421	14-0407			GS 450L	0450	1985 - 1988	14-0400	14-0410		
LT 4WD	0250	1994 - 1996	14-0421	14-0422			GS 450S	0450	1980 - 1981	14-0400	14-0410		
LT 4WDX	0250	1991 - 1993	14-0421	14-0407			GS 450T	0450	1981 - 1982	14-0400	14-0410		
LTF 250	0250	1988 - 1989	14-0421	14-0410			GS 450TX	0450	1982	14-0400	14-0410		

CC- Displacement, L- Left hand, R- Right hand.

OE Style Replacement Levers

Model	CC	Model Year	Black L-Hand	Black R-Hand	Polished L-Hand	Polished R-Hand	Model	CC	Model Year	Black L-Hand	Black R-Hand	Polished L-Hand	Polished R-Hand
GS 450TX	0450	1983	14-0400				VS 700 GLEP	0700	1986 - 1987			14-0402	14-0409
LTR 450	0450	2006 - 2007			14-0530		VS 700 GLF	0700	1986 - 1987			14-0402	14-0409
RMZ 450	0450	2005 - 2006			14-0427	14-0329	VS 700 GLP	0700	1986 - 1987			14-0402	14-0409
RMZ 450	0450	2007				14-0329	GS 750E	0750	1980 - 1983	14-0400	14-0410		
RM 465	0465	1982			14-0404	14-0506	GS 750ES	0750	1983		14-0410		
DR 500	0500	1981			14-0404		GS 750ES	0750	1985	14-0400			
GS 500E	0500	1989		14-0314			GS 750L	0750	1979 - 1991	14-0400	14-0410		
GS 500E	0500	1990 - 1998			14-0413	14-0411	GS 750S	0750	1983	14-0400	14-0410		
GS 500E	0500	1999 - 2000				14-0411	GS 750T	0750	1982 - 1983	14-0400	14-0410		
LT 500R	0500	1987 - 1990	14-0420	14-0410			GSX 750F	0750	1989 - 2003			14-0401	14-0411
LTA 500F	0500	2002 - 2005		14-0422			GSXR 750	0750	1986	14-0403	14-0410	14-0401	14-0409
LTF 500F	0500	1998 - 2002	14-0421				GSXR 750	0750	1987	14-0403	14-0410		
RM 500	0500	1983 - 1984			14-0404	14-0506	GSXR 750	0750	1988 - 1995			14-0401	14-0411
SP 500	0500	1981			14-0404		GSXR 750	0750	1996 - 1997			14-0414	14-0411
GS 550E	0550	1980	14-0400	14-0410			GSXR 750	0750	1998 - 2003			14-0414	14-0415
GS 550E	0550	1983	14-0400	14-0410			GSXR 750	0750	2004 - 2005			14-0414	14-0426
GS 550E	0550	1985	14-0400	14-0410			GSXR 750	0750	2006 - 2007			14-0429	14-0426
GS 550ES	0550	1983	14-0400	14-0410			VS 750 GLP	0750	1988			14-0402	14-0409
GS 550ES	0550	1984 - 1986		14-0410			VS 750 GLP	0750	1989 - 1991			14-0402	14-0406
GS 550ES3	0550	1983		14-0410			VL 800	0800	2001 - 2004			14-0304	
GS 550L	0550	1979 - 1983	14-0400	14-0410			VL 800 C50	0800	2005 - 2006			14-0304	14-0326
GS 550L	0550	1985 - 1986	14-0400	14-0410			VS 800GL	0800	1992 - 2004			14-0402	14-0406
GS 550M	0550	1982	14-0400	14-0410			VS 800GL (S50)	0800	2005 - 2007			14-0402	14-0406
GS 550T	0550	1981	14-0400	14-0410			VX 800	0800	1990 - 1993			14-0423	14-0411
GSF 600S	0600	1996 - 1998			14-0413	14-0411	VZ 800	0800	1997 - 2003			14-0304	14-0411
GSF 600S	0600	1999				14-0411	GS 850G	0850	1980 - 1983	14-0400	14-0410		
GSF 600S	0600	2000 - 2003				14-0415	GS 850GL	0850	1980 - 1983	14-0400	14-0410		
GSX 600F	0600	1988			14-0401	14-0409	RF 900R	0900	1994 - 1997			14-0402	14-0411
GSX 600F	0600	1989 - 2001			14-0401	14-0411	RF 900RZ	0900	1995			14-0402	14-0411
GSXR 600	0600	1997 - 2000			14-0414	14-0411	GS 1000E	1000	1980	14-0400	14-0410		
GSXR 600	0600	2001 - 2003			14-0414	14-0415	GS 1000G	1000	1980 - 1981	14-0400	14-0410		
GSXR 600	0600	2004 - 2005			14-0414	14-0426	GS 1000GL	1000	1980 - 1981	14-0400	14-0410		
GSXR 600	0600	2006 - 2007			14-0429	14-0426	GS 1000L	1000	1979	14-0400	14-0410		
GSXR 600W	0600	1992 - 1993			14-0401	14-0411	GS 1000S	1000	1980	14-0400	14-0410		
RF 600R	0600	1994 - 1996			14-0401	14-0411	GS 1000S	1000	1982	14-0400	14-0410		
DL 650	0650	2004 - 2006			14-0401	14-0415	GSXR 1000	1000	2001 - 2003			14-0414	14-0415
DR 650S	0650	1990 - 1993		14-0407			GSXR 1000	1000	2005 - 2006			14-0429	14-0426
DR 650SE	0650	1994 - 2003		14-0407			GSXR 1000	1000	2007			14-0424	14-0426
GR 650	0650	1983	14-0400	14-0410			SV 1000	1000	2003 - 2005			14-0424	14-0415
GR 650X	0650	1983	14-0400	14-0410			SV 1000S	1000	2003 - 2006			14-0424	14-0415
GS 650E	0650	1981 - 1982	14-0400	14-0410			TL 1000R	1000	1999 - 2003			14-0416	14-0415
GS 650G	0650	1981 - 1983	14-0400	14-0410			TL 1000S	1000	1997 - 2001			14-0414	14-0411
GS 650GL	0650	1981 - 1983	14-0400	14-0410			GS 1100E	1100	1980 - 1983	14-0400	14-0410		
GS 650M	0650	1983	14-0400	14-0410			GS 1100ES	1100	1983	14-0400	14-0410		
LS 650F	0650	1986 - 1987			14-0304	14-0409	GS 1100G	1100	1982 - 1983	14-0400	14-0410		
LS 650P	0650	1986 - 1988			14-0304	14-0409	GS 1100GK	1100	1982 - 1984	14-0400	14-0410		
LS 650P	0650	1995 - 2000			14-0304	14-0406	GS 1100GL	1100	1982 - 1983	14-0400	14-0410		
SV 650	0650	1999 - 2006			14-0401	14-0415	GS 1100L	1100	1980	14-0400	14-0410		
SV 650S	0650	1999 - 2006			14-0401	14-0415	GS 1100S	1100	1983		14-0410		
XN 85	0673	1983	14-0400	14-0410			GSX 1100F	1100	1988	14-0403	14-0410		
GS 700E	0700	1985	14-0400	14-0410			GSX 1100F	1100	1989 - 1993	14-0403	14-0312		
GS 700ES	0700	1985	14-0400				GSX 1100G	1100	1991 - 1993			14-0402	14-0411
GV 700GL	0700	1985	14-0403	14-0410			GSXR 1100	1100	1986 - 1988	14-0403	14-0410		
GV 700GLF2	0700	1985	14-0403	14-0410			GSXR 1100	1100	1989 - 1998			14-0402	14-0411
LTF 700	0700	2005		14-0407			GS 1150E	1150	1985 - 1986		14-0410		
LTV 700F	0700	2005				14-0331	GS 1150EF2	1150	1985		14-0410		
VS 700 GLEF	0700	1986 - 1987			14-0402	14-0409	GS 1150ES	1150	1984 - 1986	14-0400	14-0410		

CC- Displacement, L- Left hand, R- Right hand.

OE Style Replacement Levers

Model	CC	Model Year	Black L-Hand	Black R-Hand	Polished L-Hand	Polished R-Hand	Model	CC	Model Year	Black L-Hand	Black R-Hand	Polished L-Hand	Polished R-Hand
GS 1150ES3	1150	1984	14-0400	14-0410			GSX 1300R	1300	1999 - 2005			14-0424	14-0415
GSF 1200S	1200	1997 - 2000			14-0402	14-0411	VS 1400GLF	1400	1987			14-0402	14-0409
GSF 1200S	1200	2001 - 2003			14-0424	14-0415	VS 1400GLP	1400	1996 - 2004			14-0402	14-0406
GSF 1200S	1200	2004 - 2005			14-0424		VS 1400GLP (S83)	1400	2005 - 2006			14-0402	14-0406
GSF 1200SA	1200	1997			14-0402	14-0411	VL 1500LC	1500	1998 - 2004			14-0522	14-0411
GV 1200GL	1200	1985 - 1986	14-0403	14-0410			VL 1500LC C90	1500	2005 - 2006			14-0522	14-0411
GV 1200GLF2	1200	1985	14-0403	14-0410			VZ 1600	1600	2004 - 2005			14-0327	14-0328



OE Style Offroad



OE Style Street



MX Forged Levers

Model	CC	Model Year	Polished L-Hand	Polished R-Hand
RM 65	0065	2003 - 2005	14-9310	14-9329
RM 80	0080	1986 - 2001		14-9318
RM 85	0085	2002 - 2004		14-9318
RM 85	0085	2005 - 2007	14-9405	14-9329
RM 100	0100	2003	14-9310	14-9329
DRZ 125L	0125	2003 - 2006		14-9318
RM 125	0125	1985 - 1991		14-9318
RM 125	0125	1992 - 1995	14-9405	14-9318
RM 125	0125	1997 - 2003	14-9405	14-9218
RM 125	0125	2004 - 2007	14-9405	14-9329
DR 250	0250	1990 - 1993		14-9318
DRZ 250	0250	2000 - 2006		14-9318
RM 250	0250	1985 - 1991		14-9318
RM 250	0250	1992 - 1995	14-9405	14-9318
RM 250	0250	1997 - 2003	14-9405	14-9218
RM 250	0250	2004 - 2007	14-9405	14-9329
RMX 250	0250	1989 - 1998		14-9318
RMZ 250	0250	2004	14-9310	14-9329
RMZ 250	0250	2005 - 2007		14-9329
DR 350	0350	1990 - 2000		14-9318
DRZ 400E	0400	2000 - 2006		14-9218
DRZ 400EK	0400	2007		14-9218
DRZ 400K	0400	2001 - 2004		14-9218
DRZ 400Y	0400	2000		14-9218
RMZ 450	0450	2005 - 2007	14-9427	14-9329

Wide Blade Levers

Model	CC	Model Year	CF Look Brake	CF Look Clutch	Chrome Brake	Chrome Clutch	Skull Brake	Skull Clutch
GSX 600F	0600	1989 - 2001	14-0805	14-0806				
GSXR 600	0600	1997 - 2000	14-0805					
GSXR 600W	0600	1992 - 1993	14-0805	14-0806				
RF 600R	0600	1994 - 1996	14-0805	14-0806				
LS 650F	0650	1986 - 1987			14-0711	14-0703		
LS 650P	0650	1986 - 1988			14-0711	14-0703		
LS 650P	0650	1995 - 2000			14-0707	14-0703	14-0907	14-0903
SV 650	0650	1999 - 2002		14-0806				
VS 700 GLEF	0700	1986 - 1987			14-0711	14-0706		
VS 700 GLEP	0700	1986 - 1987			14-0711	14-0706		
VS 700 GLF	0700	1986 - 1987			14-0711	14-0706		
VS 700 GLP	0700	1986 - 1987			14-0711	14-0706		
GSX 750F	0750	1989 - 1997	14-0805	14-0806				
GSXR 750	0750	1989 - 1995	14-0805	14-0806				
VS 750 GLP	0750	1988			14-0711	14-0706		
VS 750 GLP	0750	1989 - 1991			14-0707	14-0706	14-0907	14-0906
VS 800GL	0800	1992 - 2004			14-0707	14-0706	14-0907	14-0906
VS 800GL (S50)	0800	2005 - 2007			14-0707	14-0706	14-0907	14-0906
RF 900R	0900	1994 - 1997	14-0805	14-0807				
RF 900RZ	0900	1995	14-0805	14-0807				
GSX 1100F	1100	1989 - 1993	14-0805	14-0807				
GSX 1100G	1100	1991 - 1993	14-0805	14-0807				
GSXR 1100	1100	1989 - 1998	14-0805	14-0807				
GSF 1200S	1200	1997 - 1999	14-0805	14-0807				
GSF 1200SA	1200	1997	14-0805	14-0807				
VS 1400GLF	1400	1987			14-0711	14-0706		
VS 1400GLP	1400	1996 - 2004			14-0707	14-0706	14-0907	14-0906
VS 1400GLP (S83)	1400	2005 - 2006			14-0707	14-0706	14-0907	14-0906

MX Forged Levers

Roller bearing in clutch pivot



Wide Blade Style Levers



CC- Displacement, L- Left hand, R- Right hand, CF Look- Carbon Fiber Look.

Rim Locks

Model	CC	Model Year	Rim Lock Front	Rim Lock Rear
DRZ 400EK	0400	2007	11-0009	11-0011
DRZ 400K	0400	2001 - 2006	11-0009	11-0011
DRZ 400Y	0400	2000	11-0009	11-0011
RM 100	0100	2003	11-0009	11-0010
RM 125	0125	2000	11-0009	11-0010
RM 125	0125	2001 - 2007	11-0009	11-0011
RM 250	0250	2000 - 2007	11-0009	11-0011
RM 80	0080	1989 - 2001	11-0009	11-0009
RM 85	0085	2002 - 2007	11-0009	11-0009
RM 85L	0085	2003 - 2007	11-0009	11-0009
RMZ 250	0250	2004 - 2006	11-0009	11-0011
RMZ 250	0250	2007	11-0009	11-0010
RMZ 450	0450	2005 - 2007	11-0009	11-0011

Suspension Tools

Model	CC	Model Year	Fork Cap Wrench	Fork Seal Bullets	Fork Seal Drivers	Spoke Wrench	T-Stem Spanner
RM 65	0065	2003				08-0296	08-0235
RM 80	0080	1989 - 2001					08-0235
RM 85	0085	2002 - 2005				08-0296	08-0235
RM 85	0085	2006				08-0296	
RM 85L	0085	2003					08-0235
RM 100	0100	2003		08-0273	08-0221	08-0133	08-0235
RM 125	0125	1998 - 1999	08-0236				
RM 125	0125	2000 - 2002	08-0236	08-0278	08-0138		08-0234
RM 125	0125	2003 - 2007	08-0236	08-0278	08-0138	08-0157	08-0234
RM 250	0250	1998 - 1999	08-0236				
RM 250	0250	2000 - 2003	08-0236	08-0277	08-0138		08-0234
RM 250	0250	2004 - 2005	08-0236	08-0278	08-0138	08-0157	08-0234
RM 250	0250	2006	08-0236		08-0138	08-0157	
RM 250	0250	2007	08-0236		08-0138		
RMZ 250	0250	2004 - 2006		08-0332	08-0331		08-0233
RMZ 250	0250	2007	08-0236	08-0278	08-0138		
DRZ 400EK	0400	2007			08-0171		08-0234
DRZ 400K	0400	2001 - 2006			08-0171		08-0234
DRZ 400Y	0400	2000			08-0171		08-0234
RMZ 450	0450	2005 - 2007	08-0236	08-0278	08-0138		

T6 Combo Tire Tool

Model	CC	Model Year	T-6 Lever Front	T-6 Lever Front & Rear	T-6 Lever Rear
DRZ 400EK	0400	2007		08-0287	
DRZ 400K	0400	2001 - 2006		08-0287	
DRZ 400Y	0400	2000		08-0287	
RM 125	0125	2000 - 2002	08-0286		08-0287
RM 125	0125	2003 - 2007			08-0287
RM 250	0250	2000 - 2003	08-0286		08-0287
RM 250	0250	2004 - 2007			08-0287
RMZ 250	0250	2004 - 2005	08-0286		08-0289
RMZ 250	0250	2006 - 2007			08-0289
RMZ 450	0450	2005 - 2007			08-0289

Pro Bleeder

Model	CC	Model Year	Pro Bleeder
RM 85	0085	2000 - 2007	11-0027
RM 125	0125	2000 - 2007	11-0027
RM 250	0250	2000 - 2007	11-0027
RMZ 250	0250	2004 - 2007	11-0027
RMZ 450	0450	2005 - 2007	11-0027

Flywheel Pullers

Model	CC	Foot Note	Model Year	Flywheel Puller
RM 65	0065		2003	08-0026
DS 80	0080		1978 - 2000	08-0026
DR 100	0100		1983 - 1990	08-0026
RM 100	0100		2003	08-0026
DRZ 110	0110	060	2003 - 2005	08-0372
DR 125	0125		1982 - 1988	08-0026
RM 125	0125		2000 - 2007	08-0026
ALT 185	0185		1985	08-0026
DR 200	0200		1986 - 1988	08-0026
LTF 250	0250		2002 - 2007	08-0306
LTZ 250	0250		2004 - 2007	08-0306
RM 250	0250		2000 - 2007	08-0026
RMZ 250	0250		2004 - 2006	08-0257
DRZ 400E	0400		2000 - 2007	08-0306
DRZ 400K	0400		2001 - 2006	08-0306
DRZ 400S	0400		2000 - 2006	08-0306

Model	CC	Foot Note	Model Year	Flywheel Puller
DRZ 400Y	0400		2000	08-0306
LTZ 400	0400		2003 - 2007	08-0306
RMZ 450	0450		2005 - 2007	08-0257
GSXR 600	0600		2001 - 2007	08-0390
SV 650	0650		1999 - 2007	08-0085
SV 650S	0650		2001 - 2007	08-0085
GSXR 750	0750		2001 - 2007	08-0390
GSXR 1000	1000		2001 - 2006	08-0390
GS 1100E	1100		1981 - 1982	08-0027
GS 1100ES	1100		1983	08-0027
GS 1100G	1100		1982 - 1983	08-0027
GS 1100GK	1100		1982 - 1984	08-0027
GS 1100GL	1100		1982 - 1983	08-0027
GS 1100L	1100		1980	08-0027
GS 1100S	1100		1983	08-0027

Foot Notes - **060** - Puller body also fits CRF450X 2004-2007 but requires thread protector C08-0257B. For complete Flywheel Puller kit for the CRF450X order part # 08-0425.

CC- Displacement

Reference Chart

Model	Year	Flywheel Puller	Front Axle Nut	Rear Axle Nut	Front Axle Internal Hex Size	Fork Tube Dia.	Fork Cap Size	Fork Cap Bleeder Size	T-Stem Nut	T-Stem Spanner	T-Stem Spanner Wrench	Spoke Nipple Size	Spark Plug Size	Rim Lock
JR 50	78-06	08-0026			N/A							F-3.6 / R-3.6		
RM 65	2003	08-0026			N/A	33mm			30mm	40mm	08-0235	F-5 / R-5	13/16"	
RM 80	89-01				N/A	35mm			30mm	40mm	08-0235		13/16"	1.40F / 1.60R
RM 85	02-05				N/A	37mm		M5x0.8	30mm	40mm	08-0235	F-5 / R-5	13/16"	1.40F / 1.60R
RM 85L	2003				N/A				30mm	40mm	08-0235		13/16"	1.40F / 1.85R
RM 100	2003	08-0026	17mm	19mm	N/A	36mm		M5x0.8	30mm	40mm	08-0235	F-6 / R-6	13/16"	1.40F / 1.85R
DR-Z110	03-06				N/A	30mm			30mm	46mm		F-5 / R-5	5/8"	1.40F / 1.60R
RM 125	2000	08-0026	22mm	24mm	19mm	47mm		M5x0.8	32mm	42mm	08-0234		13/16"	1.60F / 1.85R
RM 125	01-07	08-0026	21mm	24mm	19mm	47mm	50	M5x0.8	32mm	42mm	08-0234	F-6.8 / R-6.8	13/16"	1.60F / 2.15R
RM 250	00-03	08-0026	22mm	24mm	19mm	46mm		M5x0.8	32mm	42mm	08-0234		13/16"	160F / 2.15R
RM 250	04-07	08-0026	21mm	24mm	19mm	47mm	50	M5x0.8	32mm	42mm	08-0234	F-6.8 / R-6.8	13/16"	160F / 2.15R
RM 250	2006	08-0026	21mm	24mm	19mm	47mm	50	M5x0.8	32mm	42mm	08-0234	F-6.2 / R-6.6	13/16"	160F / 2.15R
RM-Z 250	04-06	08-0257	22mm	32mm	19mm	48mm	49.5	M5x0.8	32mm	38mm	08-0233		5/8"	1.60F / 2.15R
RM-Z 250	2007													1.60F / 1.85R
DR-Z 400	00-07	08-0306	24mm	24mm	19mm	49mm		M5x0.8					5/8"	160F / 2.15R
LT-Z400 QUAD	03-06	08-0306											5/8"	
RM-Z 450	05-07	08-0257	21MM	32MM	19MM	47mm	50MM	M5x0.8	32mm	42mm	08-0234	F-6.3/ R-6.8	5.8"	1.60F/2.15R

What's in a Name ?

Name	Model No.	Displacement (CC)	Vehicle Type
Bandit	GSF 400	0400	Street
Bandit	GSF 600S	0600	Street
Bandit	GSF 1200S	1200	Street
Bandit	GSF 1200SA	1200	Street
Boulevard C50 Volusia	VL 800 C50	0800	Cruiser
Boulevard C90	VL 1500LC C90	1500	Cruiser
Boulevard S50	VS 800GL (S50)	0800	Cruiser
Boulevard S83	VS 1400GLP (S83)	1400	Cruiser
Burgman 400	AN 400	0400	Scooter
Burgman 400S	AN 400S	0400	Scooter
Burgman 650	AN 650	0650	Scooter
Burgman 650 Executive	AN 650A	0650	Scooter
Cobra	T500	0500	Street
Duster	TS 125	0125	Dual Sport
Eiger 2x4	LTF 400	0400	ATV
Eiger 2x4 Auto	LTA 400	0400	ATV
Eiger 4x4 Auto	LTA 400F	0400	ATV
Eiger 4x4 Manual Transmission	LTF 400F	0400	ATV
GSXR 50	RB 50	0050	Sportbike
Hayabusa	GSX 1300R	1300	Sportbike
Honcho	TS 100	0100	Dual Sport
Hustler	T250	0250	Street
Intruder	VS 700 GLEF	0700	Cruiser
Intruder	VS 700 GLEP	0700	Cruiser
Intruder	VS 700 GLF	0700	Cruiser
Intruder	VS 700 GLP	0700	Cruiser
Intruder	VS 750 GLP	0750	Cruiser
Intruder	VS 800GL	0800	Cruiser
Intruder	VS 1400GLF	1400	Cruiser
Intruder	VS 1400GLP	1400	Cruiser
Intruder	VL 1500LC	1500	Cruiser
Katana	GS 550M	0550	Sportbike
Katana	GSX 600F	0600	Sportbike
Katana	GS 650G	0650	Street
Katana	GS 650GL	0650	Street
Katana	GS 650M	0650	Street
Katana	GS 750S	0750	Sportbike
Katana	GSX 750F	0750	Sportbike
Katana	GS 1000S	1000	Sportbike
Katana	GS 1100S	1100	Sportbike
Katana	GSX 1100F	1100	Sportbike
Katana	GSX 1100G	1100	Sportbike
King Quad	LT 4WDX	0250	ATV
King Quad	LTF 4WD	0250	ATV
King Quad	LT 300F	0300	ATV
King Quad	LTF 300F	0300	ATV
King Quad 450 4x4	LTA 450X	0450	ATV
King Quad 4x4	LTF 4WDX	0280	ATV
King Quad 4x4	LTF 700	0700	ATV

Name	Model No.	Displacement (CC)	Vehicle Type
King Quad 700 4x4	LTA 700X	0700	ATV
Madura	GV 700GL	0700	Cruiser
Madura	GV 700GLF2	0700	Cruiser
Madura	GV 1200GL	1200	Cruiser
Madura	GV 1200GLF2	1200	Cruiser
Marauder	VZ 800	0800	Cruiser
Marauder	VZ 1600	1600	Cruiser
Ozark	LTF 250	0250	ATV
Prospector	TC 125	0125	Dual Sport
Quadracer	LT 250R	0250	ATV
Quadracer	LTR 450	0450	ATV
Quadracer	LT 500R	0500	ATV
Quadrunner	LT 80	0080	ATV
Quadrunner	LT 125	0125	ATV
Quadrunner	LT 160E	0160	ATV
Quadrunner	LTF 160	0160	ATV
Quadrunner	LT 185	0185	ATV
Quadrunner	LT 230E	0230	ATV
Quadrunner	LT 230GE	0230	ATV
Quadrunner	LTF 230	0230	ATV
Quadrunner	LT 250E	0250	ATV
Quadrunner	LT 250EF	0250	ATV
Quadrunner	LT 300E	0300	ATV
Quadrunner 250 4x4	LT 4WD	0250	ATV
Quadsport	LT 230S	0230	ATV
Quadsport	LT 250S	0250	ATV
Quadsport	LTZ 400	0400	ATV
Quadsport 250	LTZ 250	0250	ATV
Raider	T305	0305	Street
Rebel	T350	0350	Street
Rotary	RE 5	0500	Street
Rover	RV 90	0090	Offroad
Savage	TS 250	0250	Dual Sport
Savage	LS 650F	0650	Cruiser
Savage	LS 650P	0650	Cruiser
Sierra	TS 185	0185	Dual Sport
Tempter	GR 650	0650	Street
Tempter	GR 650X	0650	Street
Titan	T500	0500	Street
Tracker	RV 125	0125	Offroad
Turbo	XN 85	0673	Sportbike
Twin Peaks	LTV 700F	0700	ATV
Vinson Auto	LTA 500F	0500	ATV
Vinson Manual	LTF 500F	0500	ATV
Volusia	VL 800	0800	Cruiser
V-Strom	DL 650	0650	Dual Sport
V-Strom	DL 1000	1000	Dual Sport
VX 800	VX 800	0800	Street
X5 Invader	T200	0200	Street